

Shepperton

Your Award Winning Community Magazine

Matters

Issue 114

June 2021

Your Local view of Shepperton and Laleham



SPELTHORNE MEANS BUSINESS AWARDS 2019
2019 Winner
Runner up to Best Business in Spelthorne

SPELTHORNE MEANS BUSINESS AWARDS 2019
2019 Winner
Best Business in Sunbury-on-Thames and Hillford

Spelthorne in Bloom Launches



FIND OUT WHAT YOUR HOME IN SHEPPERTON IS WORTH



Use My FREE Instant Online Valuation Tool

If you're thinking of moving, start by getting a Hometrack Valuation Report to see how much your home is worth.

Hometrack is the UK's largest automated valuer of residential properties and is relied upon by 13 of the 15 top UK high street lenders.

This report normally costs £19.95 and includes ALL recent house sales near you!

Zoe Foxman
Branch Director



Get your **FREE** online valuation report at: www.TWValue.co.uk
or call: (24/7) **01932 558 080**



EweMove respects any existing sole agency agreement already in place with another agent.

Welcome!

June 2021

June! A month of new found freedom and we welcome the reopening of beloved cultural venues. Make the most of it, but please remain cautious.

We learned as we went to press that the Squire's annual rose show is not going to happen, but to mark the month of glorious roses we are sharing this photo from the rose show 2 years ago.

However, Spelthorne in Bloom is launching, so use your new found gardening skills, get your gardens looking splendid and make sure you enter them into the competition.

News on the high street is that we are getting another bakery and also a French restaurant. There are still a lot of empty units, but Shepperton does seem to be attracting a lot of

new businesses lately which is great news.

So stay safe, be kind and let's keep our community healthy, happy and thriving.

Until next month



Monica

Reader Offers

Barre Clases - 50% off when you mention ad p11
Garolla - Garage Doors from £895 inc
Facial Body Sculpting - contouring offers
Quality Fruit - Produce Box £24.99

Contents

Turret Grinding Wheel, Sunbury	4
Bereavement Café Launches	8
Squire's Celebrate 85 Years	10
Shepperton Celebrant in award final	14
Why Duppa's Village?	17
Christian Aid Week	16
Shepperton Filming for air disaster doc	18
Hallifordian in Olympics Squad	21
Kwasi Kwarteng visits Shepperton	23
Local Capture	26/27
Connecting Patients with Loved ones	29
Weddings are back!	30
Recipe of the Month	34
Liquid Leisure Eco Plans	37
Spelthorne in Bloom 2021	39
Laleham Residents Association	41
Platts Eyot Fire Raises Questions	43
Charlton Village Residents Association	45
What's in a Name?	46
Jolly Brit Restoration	48
Keeping our Community Safe	52
Shepperton Beat	54
Gardening Matters	60
Ad Index and Costs	62



Published by:
Village Matters Ltd

Advertising / Editorial :
Monica Chard

Telephone: 07979 808991

Email: monica@villagematters.co.uk

www.villagematters.co.uk

Front Cover: Fabulous Roses. Squire's Rose Show by Monica Chard

Please email hi res photos for consideration for covers to monica@villagematters.co.uk



Please 'like' us on Facebook.
www.facebook.com/Sunbury&SheppertonMatters



Turret Grinding Wheel, Sunbury

By Nick Pollard



Sunbury was once home to a variety of manufacturing businesses, most of which have disappeared, along with the jobs they provided for the local population. One of these was known as the Turret Grinding Wheel works, which was located on a site off Fordbridge Road, where there is now a small industrial estate.

The American Samuel Briggs arrived in Sunbury in 1909 and set up a works in Highfield Road (off Halliford Road) to make abrasive grinding wheels, bringing the Denby-Hart patents with him. Grinding wheels are used in industry for abrasive cutting and machining of metals. They are composed of a coarse aggregate embedded in a cement, moulded into a disc shape, and baked to harden them. Briggs later took on British partners and the company became Mc Ewen, Denby & Hart-Briggs Ltd. By 1922 the Managing Director was H. Mc Ewen, and the other directors were J.N. Briggs (presumably the son of Samuel) and E.F. Denby. In common with many companies, besides the works in Sunbury they had a London office, in Queen Victoria Street, where the commercial side of the business was handled.

The company also produced complete machines such as saw-sharpeners. Incidentally, the name 'Turret' derives from a type of machine tool that has multiple cutting or grinding tools mounted on a rotating block, like a gun turret, which can be rotated to use the required tool without having to set the part up on the machine again.

As the works expanded, the main entrance was changed from Highfield Road to Fordbridge Road, possibly for better access as Highfield Road was unmade at the time. The factory was surrounded by the greenhouses and fields of Homewood's nurseries.

The photo shows the works from the air, from the south, with the entrance from Highfield Road visible at top left. The building with the prominent chimneys at the front on the right was where the ovens were located which baked the completed grinding wheels. If you have any memories of working at 'Turret' do let us know.

Local Specialists since 1984

Let us help you find your perfect kitchen, bedroom or home office.



www.ashfordkitchensandinteriors.co.uk

Farnham Common Showroom 1-2 The Parade, Farnham Common, Bucks SL2 3QJ 01753 642362

Ashford Showroom 85 Church Road, Ashford, Middlesex TW15 2PE 01784 245964

Thank you!

Dear Residents,

I would like to thank the residents of Laleham & Shepperton who voted for me in the recent Surrey County Council Elections. You have placed your trust in me, and you can be assured I will not let you down.

I am honoured to have been elected to represent you all at the County Council.

I am looking forward to engaging with as many residents as possible and working positively with the Residents Associations to protect and enhance our communities. Residents have already expressed their concerns about the speed of traffic on our local roads, some just passing through our villages. I will be requesting feasibility studies are undertaken to explore various options for reduced current speed limits. It is my intention to set up a monthly surgery to enable residents to meet with me to discuss any ideas or concerns you may have. You will hear more about this as soon as I am able to secure a suitable venue.

In the meantime, please do not hesitate to contact me

Kind Regards

Maureen

Maureen Attewell, County Councillor Laleham & Shepperton

Tel: 07951 655656

Email: Maureen.Attewell@surreycc.gov.uk



Barre Classes

by Clare Fisher at Ballero Dance Studio

Tone and sculpt your body, relieve stress and have fun! Barre is a high intensity, low impact, blend of ballet strength training and pilates.



Online, outdoor and studio classes.

For enquiries or to book a trial class please

call Clare on 07970039105 or email

info@ballero.co.uk.

www.ballero.co.uk

ONLINE ENGLISH LESSONS



I am a Trinity College Cert-TESOL qualified tutor with more than 20 years experience.

I offer one to one or small group online lessons for adults.

I design my lessons to meet the individual needs of students. All aspects of language skills covered: reading, writing, listening, speaking, grammar, vocabulary and pronunciation. Learn or improve your English in a fun and flexible way!

For more information:

Marcia Amorim

Email: amorim19@yahoo.com

or mobile: 07789 282589

STUDIO NEWS

OUTDOOR COMMUNITY SCREENING

Save the Date! All being well, we're hoping to hold our first community outdoor screening for some time, on Friday 20th August in the gardens at Shepperton Studios. All details will be confirmed nearer the time and all subject to government guidelines regarding COVID. We would love your suggestions for a film to show for all the family. Please email Kathryn.maidment@pinewoodgroup.com



CAREERS

At the time of going to print, the following vacancies are available within the Pinewood Group:

Group Reward and HR Advisor
Security Protection Specialist Apprentice
Security Operations Centre Specialist

If you meet the criteria and skillset needed, please apply by visiting: careers.pinewoodgroup.com

GRAND OPENING OF OPEN TEA ROOMS

Just a reminder that Dramatize are opening their tea rooms at 52 Hetherington Road in Charlton Village on Saturday 29 May from 1-3pm. If you fancy a cuppa and a cake, please head down and support this new local initiative run by the students of Dramatize. The ribbon cutting will be at 2pm! Follow them on Facebook and Instagram - @DramatizeTeaRoom. Reservations can be made via www.dramatizetearoom.co.uk / 07554780272.

OFF THE LOT

Please don't forget to send in information of your small, local businesses for inclusion in our Off The Lot directory, which is sent internally to staff, tenants and productions on site. To apply and for T's and C's, please visit www.pinewoodgroup.com and search 'off the lot'.



Bereavement Café offers Support

After this terrible year just past, we may feel we know all about bereavement. So many of us have lost someone dear to us, or know of those who have. And we have all lost the support of those around us, to comfort and reassure.

Losing someone you have been close to can turn life upside-down. You may feel confused, unhappy, angry or depressed, and all at the same time. You may feel OK one day, and very bad the next. You may feel that you can't keep on talking to your friends about your loss because they seem to think it is time to move on, while you still need to talk about the person you have lost, the circumstances of their death, and the feelings you struggle to manage.

A bereavement cafe is a place where bereaved people can find others who have experienced their own loss, where they can be helped to help each other talk about their experiences, with the aid of an experienced listener, there to facilitate and support.

We were planning to start such a cafe in the **Parish Centre at St. Nicholas Church, Shepperton** last May, but, of course, it was put on hold. We are now planning to launch our cafe this July. We have a team of five volunteers under the auspices of the Princess Alice Hospice, and we are opening our doors on **Monday, July 12th. at 2.30.**

The cafe will be open for an hour and a half, on the second Monday of each month. There will be tea and biscuits, for which we will need a small contribution.

If you feel our cafe could help you, put this date in your diary, and come along on July 12th, We will be there to welcome you.

Maggie Hammond



Book your Free Assessment - at Shepperton Dental Care



- Osteopathy
- Sports Massage
- Acupuncture
- Exercise Rehab

01252 621527
alignosteoclinic.com
info@alignosteoclinic.com

My PC Helper

*Got a computer problem?
Need help setting up your PC,
laptop, printer or network?*

- Local Sunbury, qualified computer technician
- No call-out charge
- No job too small



Call Peter Swettenham on
01932 599323 or 077 1000 8984



peter@my-pchelper.com
www.my-pchelper.com



July Issues will close on June 16th
Get in touch to book your advertising



monica@villagematters.co.uk
07979 808991



Creative Textiles Exhibition

Robert Phillips Gallery

Riverhouse Barn Arts Centre

Manor Road, Walton-on-Thames, Surrey, KT12 2PF

Wednesday 23rd June to Sunday 4th July 2021

Open from 10am to 4pm every day - Free Admission

Squire's Celebrate 85 Years

By Monica Chard

According to the Horticultural Traders Association, lockdown spawned an estimated 3 million new gardeners, as many of us started really treasuring outside space that we may previously have taken for granted.

But one local family has been nurturing growers for decades. This year Squire's celebrate 85 years. The business was started in 1936 as a landscaping and nursery business by DJ Squire, grandfather of Chairman Sarah Squire. It was in 1964 however, that his son Colin Squire started the garden centre business itself with the first centre opening in Twickenham, which remains head office. There are now 16 centres and the business employs over 800 staff.

Gardening may have taken on even greater popularity during the lockdowns, but 2020 was the most challenging year Squire's has faced. It was difficult to get stock. Brexit had already posed challenges to the supply chain, but lockdown meant a whole heap of uncertainty. During the first lockdown the business managed to find a way to offer a limited telephone ordering service, but stock was patchy. One innovation was offering customers lucky dip bundles. £50 got you £100 worth of plants and you made the most of it. It was popular. Sarah Squire makes the point of saying how grateful they are to all the patient customers who have played by the Covid rules and who have shown understanding and appreciation. Suppliers have also pulled out all the stops. But none of this would be possible without the staff. She says "Our colleagues have been amazing and I do want to thank them. They have been flexible and cheerful, working hard and getting us through".

Gardening will continue to be a favourite pastime. It is known to be helpful for mental health, as well as being physical and getting us out in the fresh air. There is something very special and satisfying about watching plants grow.

Squire's are very community focused,



Sarah and Colin Squire at Shepperton

supporting the 'In Bloom' initiatives, supplying planting to embellish local locks and roundabouts, as well as hosting local arts and crafts events, supporting local talent. They have also always been good at encouraging youngsters to explore gardening, with their 'Create and Grow' workshops proving very popular.

The business makes a point of sourcing plants locally, with 80% being UK grown. They have also recently appointed a Sustainability Manager to ensure that the carbon footprint of the business is managed and improved. This involves looking at waste management, the buildings, lighting and product sourcing. Black plastic is being phased out in favour of recycled and recyclable coloured pots. Old plastic pots you no longer need can be brought back to the centre for reuse too.

Finally we must mention the Rose Show, run annually at Shepperton, which is a flagship event of the Rose Society and attracts top growers from across the UK. We were hoping this year that the event would be going ahead, but sadly, we learn that it is not.

Sarah Squire, Chairman of Squire's is the third generation. It appears that the 4th generation is already in the wings so we say congratulations on the 85th anniversary and good luck with the future.



Do you need an Angel in your life?

Exceptional home care visits from exceptional carers

Most people in need of care would prefer to stay in their own home. Our home care visiting service is carefully tailored to suit you or your loved ones needs. We can help people to retain their independence and stay connected to friends, relatives and pets, safe in their own home where they want to be.

Our caregivers are carefully selected. We find excellent people with the right mix of skills, experience and a true caring nature, so that they can provide consistently superior home care.

We can help with activities ranging from shopping and companionship, to personal care, hospital discharge support and end of life care.

We can visit from one hour each week to every day, for as long as you need us to help with:

- * Companion & Social Care
- * Personal Care
- * Dementia & Alzheimer's Care
- * Post-Hospital Stay Care
- * Palliative
- * End of Life Care



Find out more about how a Visiting Angel can help
Call 0203 143 5056 or 07707 289 373

www.visiting.angels.co.uk/southmiddlesex
southmiddlesex@visiting-angels.co.uk

VisitingAngels® 
QUALITY AT HOME CARE

It's Carers Week 7th-13th June, an annual campaign to 'Make Caring Visible and Valued', raise awareness of caring, highlight the challenges unpaid carers face and recognise their contribution. If you're looking after a relative or friend who couldn't manage without you, you're 'a carer'. **Action for Carers Surrey** helps Surrey's unpaid carers of all ages, with free information, practical help, emotional support, events and advice. We're marking Carers Week with a variety of spe-



cial events. Face to face (distanced of course), we'll be holding carers' picnics all across Surrey, including at London Irish Rugby Club, Sunbury and Painshill Park, Cobham, and a wonderful African drumming workshop in Guildford (see left). We're also holding events on Zoom so you can join in from home, both practical (all about wills, trusts and power of attorney) and fun (learn comic-book illustration or yoga and mindfulness). Our usual events continue, including a wide range of support groups. Find out more at www.actionforcarers.org.uk, email CarerSupport@actionforcarers.org.uk or call 0303 040 1234.





mol - solar protection

AWNINGS - PERGOLA

www.moluksolarprotection.co.uk



Mike: 07943 853 960
Matt: 07470 707 772
 Email: michael@moluksolarprotection.co.uk

EXTENDED LIVING SPACE
Perfect for any patio or terrace

- ◆ 7 Year Warranty
- ◆ Professionally Installed
- ◆ Choice of 200+ Fabrics
- ◆ Branding Available





Showroom: Luxury Bathroom World
 504 Walton Road, West Molesey KT8 2QF

To advertise call Monica on 07979 808991

Or email monica@villagematters.co.uk



Your Planning & Design Consultants

Our Services:

- Planning Permission Applications
- Building Regulations Drawings
- Structural Calculations

Loft Conversions, Garage Conversions, Extensions, Outbuildings, Interior Alterations.



We are a Surrey based company having completed in excess of 220 planning applications in several Surrey local authorities.

Our technical designer has 30+ years experience with building regulations & structural calculations.

We take the time to analyse your needs, uncover the hidden potential of your home and create an interior layout tailored to you.

Contact Us:

+44 (0)20 3902 1645
amber@plananddesign.net

Get a Free Quote Within 12 Hours
www.plananddesign.net

Shepperton Celebrant in Award Finals

Local Celebrant **Karen Maskell** has been nominated for the ‘**Rising Star award**’ in the 2021 The Celebrant Industry Awards (TCIA) hosted by The Celebrant Directory - an online hub full of glittering inspiration for those in search of celebrant-led ceremonies and celebrants.

As an industry first, these **global** awards are set to recognise those delivering excellence as nominated by fellow Celebrant colleagues, industry suppliers, couples and families.



“I never expected to be featured in such a headline!

Following a covid career change, I had been inspired by an ex colleague to become a Celebrant. Honouring a loved one’s story at a funeral, baby naming, or celebrating love in unusual locations, I now lead ceremonies for all of life’s special occasions, writing and delivering truly personal and bespoke ceremonies. For example, although marriage legalities still have to be completed, you are then free to celebrate with families and friends on a beach, up a mountain, or like one of my couples, in a beautiful garden. Love has no limits, and neither should your special day!” said Karen.

She continued: *“The past year has shown how integral Celebrants are within the funeral and weddings industry, working and supporting families through life-changing events. I’m really proud of how our members have come together and have made a difference in times of such hardship in 2020-21.”*

Quality Fruit & Flowers

64 High Street, Shepperton TW17 9AU

Trading for over 50 years

This month our family produce box includes:

Cucumber • 4 tomatoes • lettuce • 2 peppers • fine beans • new potatoes
4 jacket potatoes • strawberries • spring onions • salad cress • baby spinach
4 apples • 5 bananas • 4 easy peelers • broccoli • carrots
seedless grapes • blueberries • rocket

All delivered to your door for £24.99 Shepperton only on Fridays and Saturdays.

To order please call 01932 241706 or text 07966 203248 and we will call you.

Orders to be received by midday Thursdays. Our boxes are changed weekly to ensure you get a great variety each week.

We may change an item of the selection if unavailable

We look forward to seeing you



Winner of the Sunbury & Shepperton Rotary Community Business of the Year Award 2014

Fruit & Veg and Flowers:
07966 203248
Juliehennessy72@gmail.com

Helping Shepperton to stay safe!



RIVERMEDE
COURT
CINNAMON LUXURY CARE

TAKE A
PERSONALISED
TOUR
BOOK TODAY



Peace of Mind at Rivermede Court

As well as offering exceptional residential care and short stays, Rivermede Court has a dedicated dementia community where our trained team celebrates the uniqueness of every individual with specialist care, engaging activities and uplifting living experiences.

We are delighted that Rivermede Court is now able to welcome visitors and potential residents. You can book an appointment to view our home in person in line with Government guidelines or if preferred, we can still offer a virtual tour.

At Rivermede Court, people will always come first.

To find out more and to arrange a personalised visit please call Sandra on 01784 817735 or email rivermede.enquiries@cinnamoncc.com

 @RivermedeCourtCare

RESIDENTIAL CARE | DEMENTIA CARE | RESPITE CARE

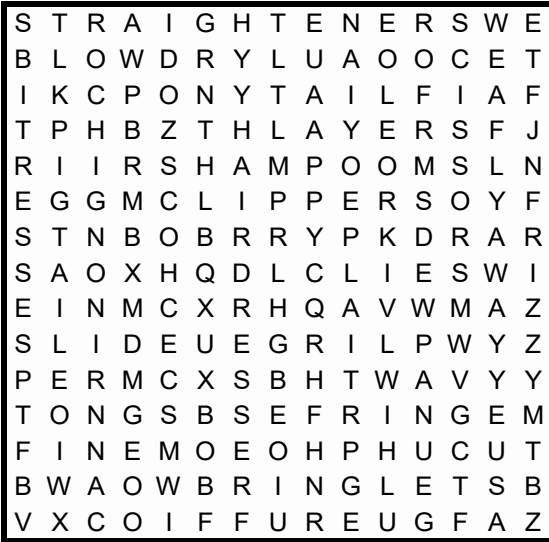
Rivermede Court Care Home
The Avenue, Egham, Surrey, TW20 9AD
www.cinnamoncc.com/rivermedecourt

*Photography taken pre COVID-19



Word Search

We've missed hairdressers!
Can you find all the words associated
with them in the letter grid



- | | |
|-------------|-------------|
| beehive | layers |
| blow-dry | perm |
| bob | pigtail |
| braid | plait |
| chignon | ponytail |
| clippers | ringlets |
| coiffure | scissors |
| comb | shampoo |
| curly | slide |
| cut | straighten- |
| fine | ers |
| flyaway | style |
| fringe | tongs |
| frizzy | tresses |
| hairdresser | wavy |

Solution p 44

NEW
EXTENDED
SEATING AREA

THE FERRY

Coffee Shop

PURVEYORS OF FINE COFFEE, TEA & SNACKS




We're Open! We look forward to welcoming you back





Visit www.FerryCoffeeShop.com for open hours and updates

 facebook.com/TheFerryCoffeeShop
 instagram.com/theferrycoffeeshopshepperton

The Ferry Coffee Shop, Ferry Lane, Shepperton, TW17 9LQ. Tel: 01932 221094

Please mention Shepperton Matters when responding to adverts

What is Duppa's Village?

Justine Irwin (Sunbury and Shepperton Local History Society)

You may be aware that there is a small 'village' within Shepperton, perhaps you have spotted the Duppa's Village sign (seen from Russell Road opposite Bishop Duppa's Park). You may have also been aware the sign was showing its age and people could not even see the name.

Some of you eagle eyed people may have spotted that the sign has now been re-painted. Thanks to the residents of Duppa's Village the sign is once again nice and clear for all to see. A special thank-you to Marie, Steve and Sue from Mitre Close for their hard work to achieve this and to the residents for contributing to the cost. We hope to have a plaque reveal when we can for the residents, a good excuse for a drink to celebrate.



So what is Duppa's Village and why is it called that?

Duppa's Village is located opposite Bishop Duppa's Park and consists of Mitre Close, Cassocks Square and Clerics Walk, the houses within the village were built in the late 80s and were originally on land that historically was part of Duppa's Farm. We are lucky that we have been able to keep some character in Duppa's Village with lovely style street lights.

The Bishop of Winchester, Brian Duppa



Duppa's farm seen in the film 'Bond of Fear' (1956)

(1589-1662) was an English Bishop, Chaplain to the Royal family and advisor to Charles I of England, he actually settled down in later life in Richmond Surrey where he also died aged 73 in March 1662. Bishop Duppa owned the waterside meadows adjoining Halliford Manor (The Old Manor House).

Bishop Duppa, besides being the chaplain to Charles I from 1634, was also tutor to his sons. Duppa was made Bishop of Chichester in 1638. In 1660, on the return from exile of Charles II of England to restore the monarchy, Duppa was made Bishop of Winchester and Lord Almoner.

Apart from Bishop Duppa's Park and Duppa's Village in Shepperton there is a Duppa's Hill in Waddon, Croydon. There are 2 sets of almshouses named after him; these were erected with his funds or endowed with the income from his lands, and these are Duppa Almshouses, Pembridge, Herefordshire, and Bishop Duppa's Almshouses, Richmond (now owned by Richmond Charities).

So a brief little history behind the sign and Duppas Village. I am lucky to live in Duppas Village and hope that this article sheds some light on it for people who had stopped while it was being painted and maybe wondered why it is called Duppa's Village.

Shepperton Filming for Llandow Air Disaster Doc

By Anthony Hontoir

Readers of this magazine may recall an article in the July/August 2019 issue when I wrote asking for information on Captain Denis Parsons, the pilot in charge of a chartered Avro Tudor 5 airliner which crashed at Sigingstone, near Llandow, in South Wales in 1950 with the loss of 80 lives, including his own. I am making a documentary film about the disaster, and hoped to find out more about Captain Parsons because at the time of his death he was living in Sandhills Meadow, Shepperton.

My film unit has twice been in the locality: the first time was last August, to get a shot of Sandhills Meadow from across the River Thames in Weybridge; the second time was in April this year, in response to information received about where Mr Parsons is buried. The newspaper account at the time of the accident simply stated that his funeral was held in Hanworth. I immediately wondered if this might have meant St George's church, so I made inquiries to see if parish records would bear this out. Whilst waiting to find out if this was the case, I unexpectedly received news from members of an RAF squadron association – Captain Parsons had previously served in the Royal Air Force – who have been diligently helping me with research, to say that they had discovered his grave is in Feltham Cemetery.

I wasted no time in planning my second visit, whilst church records were still being checked. The first location of the day was to be the cemetery, but I began by calling at St George's church, a wonderfully picturesque building which apparently once displayed a red light on its spire as a danger signal for small aircraft intending to land at a private airfield nearby. I am told that this system worked well until an aircraft flew too low over the spire and knocked the lamp off. It was an intriguing aviation connection, but in the end I learned that Mr Parsons's funeral was *not* held there, it may well have been just a graveside service.



So there would be no filming at the church, but I headed off to Feltham and set up my camera in the cemetery to film the grave and headstone. Then to Shepperton for the next location, an establishing shot of the Thames, the best position for this seeming to be opposite the Red Lion; but as it was now lunchtime, my assistant and I stopped off there for a rather leisurely lunch before setting up the camera in the pub's garden to get a couple of scenic shots of the river.

Denis Parsons did not live very long in Shepperton with his Canadian wife and step-daughter, but I feel it has become an important part of the story, and once again I would like to ask readers to give the matter some thought – does anyone, especially amongst the locality's older residents, know of any possible connection with the family? They used to live in a bungalow called "Cockaigne", now demolished, situated near a property called "Gypsy", and I have been shown one photograph of it, but if the residents of Sandhills Meadow have any further information, please let me know. I can be contacted at Downwood Films, 13 Marlpit Lane, Porthcawl, Glamorgan, CF36 5EG, or by email: anthonyhontoir@hotmail.co.uk

Photo: Anthony Hontoir on location in April 2021 (Courtesy: Louise Jones)



SAFE ENVIRONMENT & SERVICE

We are delighted to receive a complete clean bill of health and confirmation from the CQC that The Burlington provides a **SAFE environment and service**. Visit cqc.org.uk to read the report. Here is what a family member said:

"The CQC might have come back with that "The Burlington provides a SAFE environment and service" assessment. But it is rather dry and doesn't speak to the incredible care the staff have shown my mother. We have all been through some tough times but one can only imagine the experiences your team has gone through - having to keep residents safe, loved and entertained in the midst of quarantine, dealing with all kinds of new time-consuming protocols, no doubt a huge increase in demands and stresses on staff. I'd like to express my deep appreciation to your staff and congratulate you on the CQC findings, there is so much more you have all done." Son of a resident

We are looking forward to welcoming you back to our...

COFFEE MORNINGS - EVERY FIRST WEDNESDAY OF THE MONTH
From 3rd July, 10.30am-12pm - subject to government guidelines/updates

**BOOK A SAFE AND
PERSONAL VIEWING**

**CALL NOW:
01483 930 092**

boutiquecarehomes.co.uk

f TheBurlingtonCareHome
for a glance at all the wonderful activities
our residents have been participating in.

**THE
BURLINGTON**

BY BOUTIQUE CARE HOMES

Dementia - Nursing - Residential - Respite

Compassionate Care, Family Values

68 Manygate Lane Shepperton TW17 9EE



With Lockdown Easing... TREAT YOURSELF TO THE BEAUTIFUL, REVITALISED YOU!

FREE PHONE CONSULTATION!

Body Contouring:
for 1 Area - £90 (was £150)
or 2 Areas - £130 (was £200)

SUMMER IS COMING!

The time is now for some much needed self-care. Treat yourself to a Body Contouring session with us at Facial Body Sculpting by Monika and realise results after just a few sessions!

- The best non-surgical, safe and effective way to eliminate stubborn belly jiggle
- Enjoy quick, pain-free treatments without need for recovery time
- Target stubborn areas: stomach, back, thighs, bingo wings
- Feel more confident than ever before!

Contact Monika today for more details and book your consultation.



“ I recently completed 4 sessions of cavitation treatment on my tummy and back area plus one fat freezing on stubborn fat on my belly. Monika was professional throughout and I actually enjoyed each session. My partner has commented on how smaller my tummy area looks (4 pack's starting to show now), and how curvy my sides are. Monika is honest which is what I really appreciate, she gives you the facts (these are not miracle treatments and everyone's bodies react differently). ”

- Sharon

Old Hallifordian in Olympic Squad

Great news to hear that Old Hallifordian James Woodgate has been selected as one of the six archers that will represent Team GB at the Tokyo Olympic Games.

James Woodgate left Halliford School last year and at just 18 is the youngest member of the archery team to be selected for Tokyo. On leaving Halliford James commented, "I am really happy with my A Level results and am grateful to the Halliford teachers for their hard work and support. I plan to take a gap year to focus on my archery in the Olympic squad."

Headmaster James Davies said, "I am absolutely thrilled to hear this amazing news for our former Deputy Head Prefect, James. Throughout his time at Halliford, James had the gift of successfully balancing superb academic success alongside his overriding passion for archery. As his training needs increased, we were delighted to be able to help him with time in the Sports Hall at weekends, and I was always in awe of his incredible skill and talent for the sport. James possesses all the Hallifordian values of being a brilliant team player and superbly resilient, but most of all, it is James' warm heart that we all miss here and which we are sure will enable him to be a splendid member of Team GB in Tokyo. As the brother and son of two former Olympians, I know some of the delights and demands that James will have ahead in the coming weeks and months and will be cheering for him on every step of his Olympic journey. There can be no greater honour than to represent your country. We are immensely proud of this magnificent achievement."

James picked up the sport at the age of seven, started competing at the age of nine, and has always performed well in his age group, placing in the top 3 at National Championships several times. In 2018 he won the Surrey Junior Outdoor Championships and became the reigning Southern Counties Archery Society champion. He was then nominated by Ar-



chery GB as one of the four cadet recurve men to represent Great Britain at the European Youth Cup 1st Leg as part of their development programme. He finished the season with the gold medal at the Archery GB Key Event Finals held in Caldicot Castle in Wales. From here, he has gone from strength to strength.

Mrs Woodgate commented, "We are absolutely ecstatic for James, especially after the challenges of the last twelve months. James really committed to his training in October and was presented with the selection opportunity. The Olympic coaches and Performance Director were obviously impressed with his skills, but also his attitude. We put this down to the magic dust that is sprinkled at Halliford School. Both of my boys have benefited from their time at the school. They were mentored, encouraged and given the self-belief that they can achieve anything. James has a confirmed place at Warwick University starting in September and has every intention to aim for the 2024 Olympics and maybe even the 2028 Olympics."

Archery joins shooting, triathlon, sport climbing, canoe and sailing as the first sports to announce the athletes selected to Team GB for the rescheduled Tokyo 2020 Olympic Games, which will take place from 23 July to 8 August 2021.

THE SHEPPERTON CHIROPODY CLINIC

15 B High Street, Shepperton

Established in Shepperton since 1997

Access is from Claremont Drive



To make an appointment to the surgery or a home visit ring

01932 252012

In addition to the usual full range of treatments such as corns, calluses and verrucae, we are qualified to perform nail surgery using local anaesthetic, conduct full biomechanical assessments leading to, if necessary the manufacture of custom made inserts, and the assessment of feet of diabetic patients.

In order to practice all chiropodists/podiatrists must be registered with the Health Professionals Council. Always check that your chiropodist/podiatrist is registered (www.hpcheck.org) All our chiropodists are registered.

Helping you to freedom and independence

New & Extensive Range of Rise
Recliner Chairs
(tilt-in-space chairs. Sizes to suit all)

Great range of Mobility Scooters.
Demos in store.... *And so much more*

Shepperton
Mobility

The Caring Company

Shepperton Mobility, 19-21 High Street, Shepperton, TW17 9AJ
shepperton@sheppertonmobility.co.uk

Tel 01932 224044

■ ■ ■ **trio**

PHARMACY AND TRAVEL CLINIC

NHS
Providing NHS services

NEW at Trio.
**24/7 Prescription
Pick Up**



We also offer:

- Covid Testing
- Walk in Clinic
- Yellow fever centre
- Amazon pick up point

Other services:

Shepperton
Mobility
The Caring Company

Trio Pharmacy and Travel Clinic, 19-21 High Street, Shepperton, TW17 9AJ Tel 01932 225900
www.triopharmacy.co.uk

Please mention Shepperton Matters when
responding to adverts

Kwasi Kwarteng visits Shepperton

Trio Pharmacy were honoured to receive MP Kwasi Kwarteng, who officially opened the new prescription dispenser at the back of the store in Claremont Drive. The event was attended by local councillors and Mayor of Spelthorne, Cllr. Colin Barnard.

It is the only such dispenser in Surrey and offers a genuine time saving, safe collection point. No queues in store, and collect at a time to suit you, 24/7. Whether out for your evening dog walk, rushing in the high street to do your shopping or even coming off night shift at 4am!

Important to note that if you are not able to collect your prescription in this way, a home delivery service is still operational.

Kwasi was very enthusiastic about the new service saying it represented yet another innovation from Trio who are constantly increasing their offerings.

The pharmacy is offering clinical services which means you don't need to wait for a Dr appointment, and there is a counter prescription facility too.

For Shepperton Matters this was a first too - namely the first business event we have attended since before the pandemic!



Kwasi cuts the ribbon, with Akash and Gaurang from Trio and Colin Barnard looking on



**Guardian Angel
carers**



Come and be part of a vibrant, supportive team. We will provide you with all the necessary skills you need, so you can focus on caring for our clients.

01784 611 611

Spelthorne@gacarers.co.uk
www.gacarers.co.uk/spelthorne

Roseacre Says Thank you!

We never thought after our Ofsted inspection February 2020 that we would have to close our doors in March along with so many other schools, nurseries and local businesses. Sadly as a registered charity we suffered with not being able to carry out our fundraising events. We opened our doors in September with a successful term welcoming our children and families back. Although things were different everybody was on board with our Covid19 procedures in place. The children's wellbeing is always at the forefront of our daily routine as well as a fun learning experience. Roseacre would like to thank everyone at The Parish Centre for their support over the last year. We are so happy to be here in the beautiful surroundings of St Nicholas Church. The building is a lovely place to be with natural light that floods in to our main room giving a light and spacious feel. We are glad to be back and thank all our parents for their support and wishing everyone the very best for the future ahead. www.rosecreplaygroup.co.uk.



Can you grow the tallest Sunflower?

The Sunflower Club Growing Competition 2021

Pick up a pre-planted pot from Sunbury Community Centre, 108 Vicarage Road, Sunbury TW16 7QX

Before you leave the centre take an envelope, fill in your name, age and email address and post it through the centre's letter box. Take the pot home and care for it, plant it in a safe sunny place, water it and watch it grow.

The competition entry is **free** but donations to Shepperton and Sunbury Rotary Club are always welcome and will go to a local children's charity.

On the 31st August 2021 take a selfie picture of the plant with a tape measure showing how tall it has grown and email it to flowercomp3@outlook.com



Rotary News
in Shepperton and Sunbury
www.sheppertonandsunbury-rotary.org.uk

Please mention Shepperton Matters when responding to adverts

Alan Greenwood & Sons

Independent Family Funeral Directors



A choice of the latest Jaguar or Mercedes • Hearses and Limousines
Home visit arrangements • Pre-paid funeral plans and Memorials
Caring and Compassionate 24 hour Service

18 Thurlestone Parade
High Street, Shepperton
Surrey
TW17 9AR
01932 227567

128a Oatlands Drive
Weybridge
Surrey
KT13 9HL
01932 821268

103 Terrace Road
Walton-on-Thames
Surrey
KT12 2SG
01932 244956

13 Molesey Road
Hersham
Surrey
KT12 4RN
01932 260046

Please Visit Our Website for Full Details of Our Services and to
View Our Local Obituaries

www.alangreenwoodfunerals.com

Guaranteed first class service. On time every time

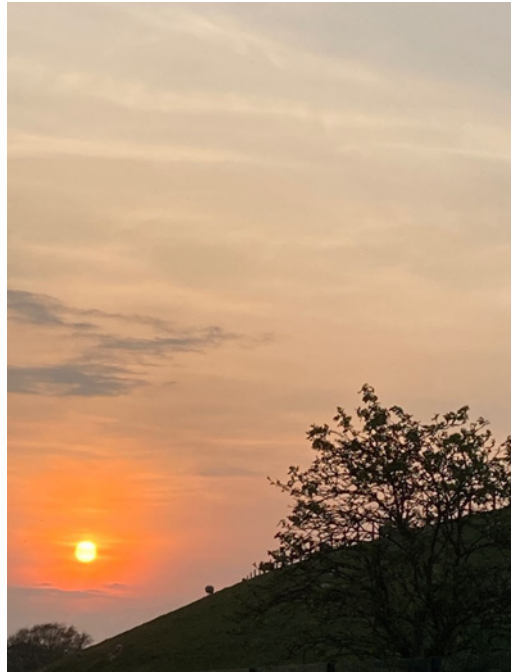
Local Capture

Thanks to this months contributors. Do email photos to monica@villagematters.co.uk
And consider entering the Capture Spelthorne competition 2021 run by the council:
www.spelthorne.gov.uk/capture
It's free to enter and closes August 31st.



*Above left, Ash Link nature reserve by Monica Chard. Above Bonnie Smith's allotment visitor.
Below Old Shepperton by Monica Chard*





Above left, sunset at Laleham riverside by Eleanor Warner . Right, Littleton sunset by Anne Hall and below left, pink moon, Ferry square by Heather Boyce





Capture Spelthorne 2021

We are looking for entries in the Capture Spelthorne Sporting Spelthorne category. Have you got a budding photographer in the family? We are wanting photos that tell a story about Spelthorne.

Closing Date is August 31st

Other categories:
Community in Spelthorne
Business in Action
Nature in Spelthorne
Under 16's

More information and entry at:

www.spelthorne.gov.uk/capture

Please mention Shepperton Matters when responding to adverts



Signature
PARKLANDS MANOR, CHERTSEY

DELIVERING PEACE OF MIND

The Signature Way

Good



- Vaccination roll out complete
- Actively welcoming new residents
- Rated Good by CQC
- In-apartment visiting available
- Engaging activities programme

Signature at Parklands Manor is open to visitors and actively welcoming new residents.

Signature at Parklands Manor has an unwavering commitment to creating a safe and welcoming environment for our residents with almost 100% of our staff and residents now vaccinated.

Residents at Parklands Manor continue to lead a life well lived with a wide range of dining options, activities, social events and entertainment in expansive communal areas that easily allow for social distancing.

Signature at Parklands Manor is open to visitors and offers in-apartment visiting as well as a number of bespoke designed internal and external visiting suites, ensuring our residents have plenty of options to continue to see their loved ones.

To find out more about how Signature at Parklands Manor can provide total peace of mind for you and your loved ones, please contact Sonia or Judy today.

01932 282 943 | enquiries.parklands@signaturesl.co.uk | signature-care-homes.co.uk

Connecting Patients with Loved Ones

By Sue Endersby

I joined the team of volunteers which is part of the PALS (Patient Advice and Liaison Service) at St Peters Hospital when I saw an ad in this magazine. We help to facilitate communication between patients and their relatives and friends. This is naturally particularly important while you can't visit because of Covid restrictions, but it will also be needed when restrictions are lifted if you can't visit for other reasons.

Every ward has a mobile phone and patients who don't have their own phone can ask to use it to phone the ward mobile, however some patients don't know it exists. Others don't know we can find their loved ones' phone numbers, or they don't have the ability to hold a phone. One of our roles as volunteers is to take the ward's mobile phone round to the patients and offer any assistance needed.

We can also offer WhatsApp, Facetime and Zoom and we have an iPad as well so you can choose which is best for the patient.

We try to cover about 14 wards between us, some of which have a constant turnover. Not all the patients can be offered the phone each week. Many patients are asleep or being attended to so we can't offer it. Sometimes we phone but we can't get hold of you.

The purpose of this article is to tell you that you can contact PALS to arrange a time for a volunteer to call you with the patient. The best way is to email us as the phone line is very busy.

It is lovely to see patients' faces light up. For example, one family was grouped round the kitchen table for a Zoom call. The elderly patient couldn't hold the iPad but I held it for him and shared with the family his non-verbal reactions, eg his eyes widened or he raised his hand. They were able to have a meaningful conversation with him.

We can also visit a patient you are worried about. One husband was concerned that his wife was depressed and needed a chat. When



I visited her, she told me that she was very positive about her situation and said he needed a chat more than she did! She still wanted to chat to me about her family and holidays she was looking forward to, and after we had finished, I phoned her husband with him we reassured him.

The nurses and all the ward staff can't do enough for the patients and are so kind and helpful, but the patients see how busy they are, and they don't like to ask unless it is important. The patients know that the staff's priority is their care and getting them home and that's what they want too.

One gentleman had his own phone but had forgotten his son's number and was worried about bothering the ward. He then said, "I am so depressed". I asked if he wanted a chat and he said he would love one as he did not want to worry his son. I was pleased to be able to listen to him, find his son's number, and pop down to Smith's for his favourite newspaper.

So if you have a relative or friend in hospital we, the volunteers, are there for you and do contact us by email – asp-tr.patient.advice@nhs.net - and book that call! Do cut out and keep the attached ad for future reference and please spread the word.

Weddings are Back!

It is wonderful to know that finally brides can get their plans back on track. Wedding venues have opened and we were delighted to hear about St Nicholas church first wedding (more next month on that one).

It has been heart breaking that plans have been cancelled or put on hold. We wish all the brides out there good luck.

During lockdown you may also have been spending time researching the big day. Have you selected a venue, supplier, dress? All those details have to be just perfect and there are lots of local suppliers to choose from.

If you are looking for a dress but don't want to spend a fortune, do remember the Princess Alice Hospice shop on Shepperton High Street, is happy to help you find an absolute bargain dress (see photo). Available in the bridal shop on the first floor are dresses, veils, shoes, outfits for the mother of the bride and also prom dresses. Why not take a look. And of course anything you do find but which needs adjusting, can also be fixed by local seamstress Shepperton Tailoring who has transformed so many bridal gowns to the perfect fit and style (see ad below).



Stephen Andrews Photography

Wedding and
Portrait Specialist

I'm always happy to help,
so feel free to contact me
using the details below.



stephenandrewsphotography.com

07798 673610

stephenandrews1@live.co.uk

Wedding Dress Alterations



Prom/Wedding Dresses

Hems

Zip repair/replacement

Taking in/Letting Out

All alterations possible

Contact Laura to discuss your requirements on

07979 821586

laura@sheppertontailoring.co.uk

www.sheppertontailoring.co.uk

Please mention Shepperton Matters when
responding to adverts

THE 1:1 DIET

by Cambridge Weight Plan®

...where all you have to lose is your weight!

Michelle's Waist Management
East Molesey



Weight Loss Centre based at 97 Walton Road East Molesey

With 30 years in the medical profession I work to exceptionally high standards and ethics, assuring you of the best care throughout your weight loss journey.

I have helped clients lose weight to...

- Achieve a healthy BMI to be accepted for IVF treatments & fall pregnant naturally
- Reverse their Type 2 Diabetes
- Reduce their hypertension and come off medications
- Reduce their Visceral Fat down to healthy levels of less than 1 litre, reducing their chance of heart disease and the list goes on...

I look forward to hearing from you to arrange a FREE no obligation appointment...

I am completely focused on your health & wellbeing. At my Centre I have the Seca mBCA 515 medical grade full body composition analyser, which can give an exact breakdown of RMR (resting metabolic rate), subcutaneous fat, visceral fat, lean muscle masses and your cellular water levels.

The Scanner uses bio-electrical impedance (BIA) to accurately measure your body. Michelle's Waist Management is the only One2One Diet Centre in Surrey with these Gold Standard facilities. Also with my 1-2-1 support I will help you answer your "whys" support and facilitate a different mindset and relationship with food. Ending the yo-yo dieting for good!

Here's how the 1:1 Diet works...

Step	TDR		Sole Source		800kcal	1000kcal	1200kcal	1500kcal	My life
	A	B	1A	1B					
CWP Product	3	4	3	4	3	2	2	1	1
Breakfast	-	-	-	-	-	150kcal	200kcal	200kcal	It's time to maintain your new weight!
Lunch	-	-	-	-	-	Salad	Salad	400kcal	Eat a healthy diet of around 1500kcal and above each day and keep active
Dinner	-	-	-	-	200kcal	400kcal	400kcal	500kcal	
Bonus	-	-	-	-	-	-	100kcal	100kcal	
Milk	-	-	-	-	-	200ml	300ml	300ml	
Water**	2.25l	2.25l	2.25l	2.25l	2.25l	2.25	2.25l	2.25l	2.25l

Michelle Whearty SRN 07769 114952

Centre fully meets Covid-19 safety measures – your welfare is my priority

TURNING GENERATION

RENT

INTO GENERATION

OWN

A new Government backed 95% mortgage scheme, launched on the 19th April to help aspiring homeowners get on the property ladder.

For many this is a familiar story, feeling trapped in a rental property paying a high monthly rent that prohibits them from saving a sizeable deposit to enable them to buy their own home.

This new scheme, principally aimed at (but not restricted to) First Time Buyers enables people to obtain a 95% mortgage from a number of mainstream High Street mortgage lenders on homes up to £600,000.

In some cases the monthly mortgage payment will be less than the monthly rent for a similar sized property. Examples of this are illustrated on this page.

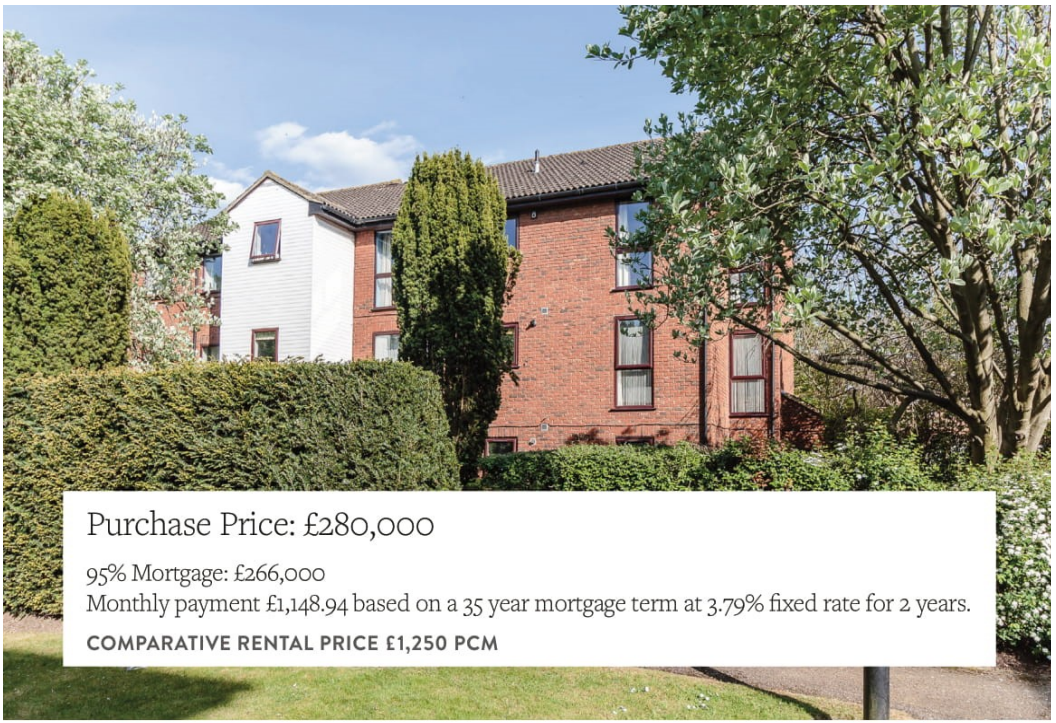
For professional friendly advice on how much you can borrow, the monthly repayments and costs involved, contact Curchods Mortgage Services team of experienced independent mortgage consultants.



OWEN MILES MNAEA
PARTNER

01932 230033

This communication does not constitute advice and should not be taken as a recommendation to purchase any of the products or services mentioned. Before taking any decisions we suggest you seek professional advice. Your home may be repossessed if you do not keep up repayments on a mortgage or any other debt secured on it.



Purchase Price: £280,000

95% Mortgage: £266,000

Monthly payment £1,148.94 based on a 35 year mortgage term at 3.79% fixed rate for 2 years.

COMPARATIVE RENTAL PRICE £1,250 PCM



Purchase Price: £490,000

95% Mortgage £465,500

Monthly payment £2,007.33 based on a 35 year mortgage term 3.79% fixed rate for 2 years

COMPARATIVE RENTAL PRICE £1,550 PCM



Purchase Price: £189,950

95% Mortgage £180,452.50

Monthly payment £780.86 based on a 35 year mortgage term 3.79% fixed rate for 2 years

COMPARATIVE RENTAL PRICE £795 PCM

Valuation fee £0 Free / £250 cashback payable on completion towards legal costs / Lender arrangement fee £995 added to mortgage / Legal & Broker fees would be payable / All mortgages subject to status.

Recipe of the Month

Eton Mess

Preparation time: 30 min

Cooking time: If making meringues allow 2 hr 30 mins plus cooling. Otherwise, no cooking time! **Serves:** 6

Ingredients

For the meringues (or you can use good quality shop-bought meringue nests)

175g caster sugar

1 thick lemon slice

3 egg whites, at room temperature

1 pinch salt

To assemble the mess

500g ripe strawberries

50g caster sugar

450ml double cream

1 tbsp icing sugar

1 tsp vanilla paste

Mint for garnish

Method

Meringues

Preheat the oven to 220C / gas 7. Line a baking tray and pour the sugar on to it then bake in the oven until it just begins to melt at the edges. Rub the inside of the mixing bowl with the lemon (this gets rid of any grease) and add the egg whites. Just before its time to take the sugar out of the oven, start whisking the whites at high speed.

Carefully tip the hot sugar and the salt into the fluffy foamy whites. Continue whisking until the mixture is cool, glossy and forms soft peaks. Lower the heat in the oven to 130C / gas ½. Heap dollops of meringue on to lined baking trays, making sure they are well spaced. Bake in the cool oven for about two and a half hours. Check after two hours. The outsides should be crisp and golden but not burned! Turn off the oven and leave the meringues inside to cool completely.



The Mess

To prepare the strawberries: wash and hull the fruit, and slice into half or quarters. Aim for bite-size pieces. Place the strawberries in a bowl, sprinkle with the caster sugar, making sure all the strawberries are coated. Place in the fridge for half an hour until the fruit goes squidgy and leaks juices.

Set a third of the strawberry mixture on one side for later. Using a potato masher lightly crush the rest into a chunky puree. Pour the double cream into a big bowl (it's best if the bowl is cold). Sift in the icing sugar and the teaspoon of vanilla paste (not essence) and whip to soft peaks.

Roughly squash and break six of the meringues. Fold the pieces and the crushed strawberries into the whipped cream. Don't mix too thoroughly. The red and white should be clearly distinct.

I tend to leave mine in a big serving dish so people can help themselves, but it looks lovely spooned into tall glasses and topped with a sprig of mint.

Owen White & Catlin LLP

S O L I C I T O R S

PRIVATE CLIENT	FAMILY LAW	RESIDENTIAL CONVEYANCING	CIVIL LITIGATION
MEDIATION	COMMERCIAL CONVEYANCING	COMPANY AND COMMERCIAL LAW	COMMERCIAL LITIGATION

Always there when you need us

56 High Street, Shepperton
01932 220 451

Conveyancing • Lasting Powers of Attorney • Family Law
Mediation • Divorce • Dispute Resolution
Commercial & Company Law • Employment Law
Criminal Defence • Wills & Probate

Offices also in:

Addlestone, Ashford (Middx), Chiswick, Esher, Feltham & Hammersmith

www.owenwhitecatlin.co.uk

The Spelthorne Business Plan Competition

2021

ONE GREAT IDEA WINS £3,500

Competition Opens: **7 June 2021**
Deadline for Entries: **16 August 2021**
Competition Final: **23 September 2021**

For more information visit: spelthorne.gov.uk/businesscomp
or join the conversation on Facebook and Twitter

facebook.com/spelthornebusinesscomp
[@SpelthorneComp](https://twitter.com/SpelthorneComp)

Organised by Kwasi Kwarteng MP and Spelthorne Borough Council

Liquid Leisure Eco Plans

By Monica Chard

You may have already visited Liquid Leisure in Charlton Village, and had fun in the water. The new attraction was heavily affected by the Covid restrictions of 2020 but managed to welcome some families to at last enjoy a much needed day out of fun and leisure. Over the winter the team spent much time developing their brand and concept and have a lot of exciting ideas.

The venue was land owned Charlton Sand and Ballast run by John and Geoffrey Pattinson. Once gravel was extracted in the 1950's the pit filled with water from the water table (the water that naturally sits below the ground) and then left to nature. The lake and its surround grew wilder, so much so that locals didn't even know the lake existed. Since 2018 gradually the land has been tamed, the brambles cut back, trees managed and the river Ash which flows through it, cleared of weed.



Charlton Sand and Ballast 1954

We met with Emma Pattinson (granddaughter) to hear about the plans for the large site. With a focus on sustainability and nature, the site is set to become an eco friendly destination, a perfect venue for children's educational trips. With nesting boxes for birds, planters with bee friendly flowers, created from reclaimed wood and an appropriate planting plan to attract wildlife. Staff uniforms will be made of recycled organic fabrics and the food outlets will be offering healthy choices on the menu. Although Liquid Leisure may be renowned



Chilliboat at Liquid Leisure

for its large inflatables, it offers also an outdoor swimming pool, with a 25 m and 50 m length, great for training and improving stamina. Life Guard training is on offer at the venue and it also offers kayak and paddleboard hire and tuition, as well as Chilliboats, which look like lots of fun and exercise.

The company is sourcing services and products locally as much as it can or within the UK.

It has proved a popular venue for both school trips and also team building days for the corporate world. Schools and businesses as far as London choose the venue.

It will be great to see how it all develops.



FOOT HELP

Home visits for all your
foot & nail care needs:-

Thick & long nails
Calluses
Diabetic & Painful Feet



Registered nurse for 30 years.
Have your feet & nails looked after by a
caring professional in your own home.



*I can also cut your hair for you.
All in the comfort of your
own home*

Please email me on:
maryb1@live.co.uk

or call me on:
01932 845688 / 07876 324082

EQUITY RELEASE

Contact
INDEPENDENT
FINANCIAL ADVICE
in Shepperton

**HARVEST FINANCIAL
MANAGEMENT**

www.harvestfinancial.co.uk
andrew@harvestfinancial.co.uk

01932 252900
07885 959377

Sudoku

		2		7			9	
3						4		6
	8	4			5		2	
					8		3	7
			7		1			
7	2		6					
	5		2			3	4	
8		1						9
	3			1		5		

Solution on p 59

Please mention Shepperton Matters when
responding to adverts

Chris White
PAINTER & DECORATOR

Best Quality
Best prices in the area
References available
All work guaranteed

Call Chris
01932 565100
07786 557188
chriswhitepds@gmail.com

Spelthorne in Bloom 2021

This summer's Spelthorne in Bloom competition will be launched in June, when the entry forms will be published online and in print, and the posters will appear on Council notice boards.

The children's poster competition attracted more than 100 entries, despite many schools being closed, and we had many entries from children who were studying (or learning) at home.

The winner was Olivia Arguirova, aged 10 from Stanwell Fields Primary School, and her poster will appear on the entry form and on the posters which will be circulating during June and July. The closing date for entries this year is Friday 16 July, and entry forms will be available at Squires Garden Centre in Shepperton, and at Notcutts Garden Centre in Staines Road, Uxbridge.

New sponsors have come forward this year.

The Best Kept Front Garden category has been sponsored by Mrs Zandra Ceaser, in memory of her late husband Gerry. Many will remember Gerry as a former Leader and Mayor of Spelthorne Borough Council, and some will remember that he was the first ever Chairman of Spelthorne in Bloom. So it is good to remember his contribution in this way.

The Best in Show category has been sponsored by Squire's Garden Centres. Many people will know Colin Squire, who lives in Uxbridge, and his daughter Sarah Squire, who is now Chairman of the Garden Centre Group. It is their 85th Anniversary year, so Colin has kindly agreed that the Best in Show can be sponsored in memory of his late father, Mr DJ Squire, the founder of the garden centre group all those years ago.

A new category has been introduced for the overall Best School entry, kindly sponsored by Notcutts Garden Centres, and the competition will be open to Spelthorne schools for the best school garden, best edible garden, and best scarecrow. Organisers hope all primary schools in the borough will be willing to take part during the summer term, as the entry forms will be sent out during half term, to give plenty of time for schools to enter before the summer holidays begin in late July.

Spelthorne in Bloom Chairman Nick Wood-Dow said it had been a struggle to keep the campaign going during the pandemic, which had affected 2020 and 2021. "We volunteers were determined to



Last years winning front garden was Kaye Friday's garden in French Street, Sunbury

do all we could to keep Spelthorne in Bloom going, after our 30th anniversary year in 2019. Last October, the Mayor and I presented all the winners with their prizes in their own homes, due to Covid restrictions, and the photos appeared in the Spelthorne Borough Bulletin.

This year all the entries for the children's poster competition came in by email or submitted online, so I would like to thank Spelthorne Borough Council so much, as officers managed the IT challenges of receiving entries and enabling our volunteers to judge them, so that we could choose a winner in time.

"We are sending out entry forms during June to as many people as possible, eg people who have entered before, and members of local Horticultural Societies, and via the garden centres. We ask keen gardeners to send in their entry forms by 16 July, so we can plan the judging for August. We also hope to hold our end of year Awards Evening at Notcutts, as long as all Covid restrictions have been lifted, and our guests can once again attend big events, and enjoy socialising with others." Spelthorne in Bloom is a free to enter competition to find the best gardens in the borough, and we hope that as many keen amateur gardeners will enter as possible to make this a great success.

Rob's Records

THINKING OF SELLING
your

Record Collection,
Vintage Record Player,
Hi-Fi System
and/or Speakers?



Just contact me by phone or email or
send details of your collection via email to
robsal251@gmail.com

*(please list carefully [records] artist/group, title,
LP/Single, Sleeve/No sleeve, the number and letters on
the label e.g. PMC1210 and on sleeve.)*

On any equipment list the name, make and model no.
working/not working.

I buy most genres; Rock & Pop e.g. Beatles, Stones etc.,
Prog Rock e.g. Led Zeppelin, Pink Floyd etc. Folk, Punk,
Psychedelic, Ambient, Reggae, Ska, Northern Soul, Rock
& Roll, Foreign Records, American, Promo's, and Demo's.

No: Country & Western, Military Band Music, Classical
Music, Commercial pop of the 80's & 90's or 78's

T: 01932 700068 · M: 07483 858946
(24 hour Answerphone)

Duplicate Bridge in Laleham



We are a small friendly Bridge Club
starting up a Duplicate Bridge
evening in Laleham Village Hall on
Wednesdays and would be pleased
to hear from any Bridge players
that would like to join us.

We plan to play from 7.30pm until
about 10 pm and table money will
be around £3 per session. Our first
evening will be on **Wednesday 23
June**, subject to covid restrictions
being lifted as planned.

If you would like to join us please
**contact Paul Ruston on 01784
453066 for further details.**

WANTED

Classic Cars
Motorcycles
& **Scoters**

I buy classic cars, motorcycles and
scooters from the 1950's, 1960's,
1970's, 1980's & early 1990's

I'm interested in anything over 25 years
old and may well pay more for your
vehicle than if you scrapped it

Anything considered, any condition

Payment by cash or bank transfer

Call Dave: 0800 970 8690
Text or WhatsApp: 07368 305363
retroandvintage@icloud.com

JAMES TRIDENT - NUMISMATIST

We buy
British & Foreign Coins

1660 to date Gold, Silver, Copper and Bronze
**Highest prices paid for Sovereigns
and Royal Mint sets in gold and silver**

Free identification and market value

Valuations for probate

Tel: 07786 268350 / 01784 455238
tridentcoins99@gmail.com



Thinking of Selling your Stamp Collection?

Cut out the commissions and sell direct to
the dealer! Home visit valuations. Immediate
payment, however large or small.

Call 01932 785635

www.jcstamps.co.uk



Laleham Update

Fingers crossed, life is looking up! It is the start of summer and covid restrictions, all being well, are due to end later this month. The plot next to best-one has had its spring makeover and wood chippings have been laid. By the time you read this the three planters by the war memorial will be replenished (weather permitting) and we have ordered a record number of hanging baskets this year. Laleham will look as splendid as ever! Thank you to all who have made contributions towards the baskets.

We normally hold our AGM at this time of year and whilst it should soon be possible to arrange a meeting some of you may understandably be reticent to attend a crowded indoor event just yet. Accordingly we will have decided to defer the meeting until September and will let you know the date in due course. We look forward to welcoming existing and new members.

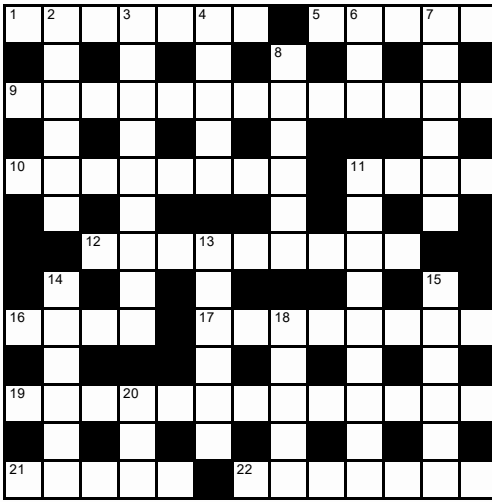
Whilst there were no events last year the LRA have been busy on planning issues.

We had hoped that Tarmac would put forward a development proposal on Home Farm that was worthy of consideration by residents. Based on our discussions with them this would have included a bypass around the centre of Laleham, additional land for the recreation ground, possibly a new community hall and a state of the art children's playground. Disappointingly, the response they submitted to Spelthorne's 'call for sites' fell a long way short of the original plans which they shared with us, limiting any sweeteners and almost doubling the number of homes to be built. We are led to understand that this proposal will be rejected by Spelthorne. Should Tarmac respond to this rejection by making substantial, beneficial revisions in the future, we will consider them further with you.

There have been long delays by Surrey in installing the zebra crossing by best-one and progressing plans for the 20mph zone in the centre of Laleham. Now that Maureen Attewell has been elected as our County Councillor we will be liaising with her to try to ensure these are expedited as soon as possible.

A duplicate bridge club is being formed in Laleham which is looking for new members. Please look out for the details elsewhere in this edition.

Contact the LRA at lalehamra@gmail.com 07545 131 448



Across

- 1 Exhibit hall, studio (7)
- 5 An aqualung (5)
- 9 Uproariously funny (5-8)
- 10 Sweaters and cardigans (8)
- 11 Conform, comply (4)
- 12 Advertising (9)
- 16 Butt, remnant (4)
- 17 Crashed (8)
- 19 A pirate might bury one! (8,5)
- 21 Brownish green (5)
- 22 Pursuing (7)

Solution p 59

Down

- 2 In pain, hurting (6)
- 3 Source of illumination (5,4)
- 4 Cider With _____, novel by Laurie Lee (5)
- 6 Casual hat (3)
- 7 Slang for sausage (6)
- 8 Cloth, textile (6)
- 11 Large flightless birds (9)
- 13 Imprison (4,2)
- 14 Complex carbohydrate (6)
- 15 English naval hero (6)
- 18 Blood-sucking worm (5)
- 20 Biblical ship built by Noah (3)

Supper for Singles

With a Cordon Bleu chef
and an actress!

Local venue

Choice of quality dishes
3/4 courses
£60 per head and bring
your own wine

Please call
07767 325902

Chartered Surveyor

Building Surveys, Home Buyers
Reports and Valuations for all
non lending purposes

40 years local experience

Nickcobbmrics@gmail.com

07876208359

www.nickcobbsurveyor.co.uk

VA CARS

Your Local Cab Company – 24 hour service

01932 222247 • 01932 245555

**Accounts
welcome**

Professional • Reliable • Airport
Local & Long Distances

Email: vacarsbase@gmail.com
www.vacars.co.uk

Licensed by Spelthorne Borough Council

Platts Eyot Fire Prompts Island Safety Questions



Bank Holiday Monday, gale force winds, a garden fire and an island full of wooden craft and flammable materials. What could possibly go wrong?!

It was devastating to see images of the fire on Platts Eyot last month. Two boathouses full of historic boats under restoration, went up in flames which were seen from miles around.

Only two years ago the old Wilson's boatyards on Lock Island, Sunbury, burned to the ground. This particular fire, dramatic and devastating as it was, didn't see as much loss as the Platts Eyot fire but it destroyed the old boathouses, which have since been razed.

A fire on Hamhaugh Island in April 2019 saw one house burned to the ground and another narrowly saved as islanders fought to contain the blaze.

The issue with all three fires is the access to

fire services is nigh on impossible. The irony is that these islands are surrounded by water which surely could make the difference between damage and total destruction. We asked the Surrey fire service to comment on the challenges of tackling island fires, but as we went to print, we have yet to hear from them. It is indisputable that the fire service did an incredible job tackling the fire on Platts Eyot, but without direct access, how were they meant to get the blaze under control? Access on fire barges? Or pumping river water? Is there such a system installed? Islanders on Hamhaugh were able to save a house as they used their pump system on the island. 13 fire engines attended and the fire service managed to transport pumps across the lock and weir to reach the blaze. Islanders used their own fire hydrants and hoses. Thank goodness for that! We would be interested to hear from any islanders who can share their own fire drills. Email monica@villagematters.co.uk. And we still hope to hear from the fire services.

The loss at Platts Eyot was extensive. Amongst the many craft lost was the Lady Gay (see below), one of the Dunkirk Little Ships, which had recently undergone restoration. Thankfully there was no loss of life, but this must be a wake up call to get better systems in place to tackle island fires.



Will Writing Service and Lasting Power of Attorney

Contact
Andrew Wasilewski
HARVEST WILLS

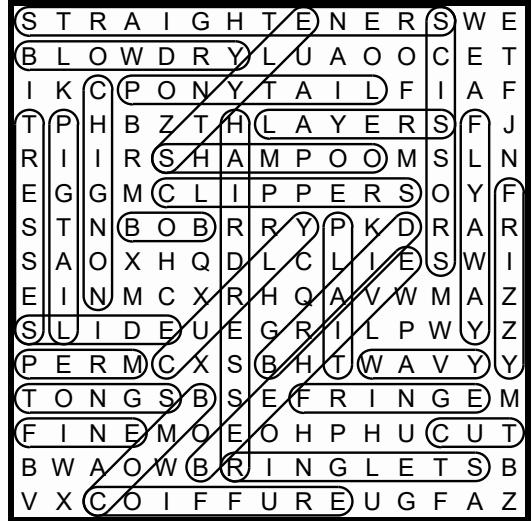
This is a Face to Face Service

Harvest Wills, Terminal House, Station Approach,
Shepperton, TW17 8AP

andrew@harvestwills.co.uk
Tel: **01932 252900**
Mob: **07885 959377**
www.harvestwills.co.uk



*This firm is compliant with the
IPW Code of Practice*



Solution June Word Search

Your Local Electrician



All electrical
work

Call Pete Now!

01784 390530
07951 376153

Fully Registered
FREE quotes

S J HARRIS

Painters & Decorators

07956 527449 01932 713677

All Painting & Decorating
Maintenance & Repairs
Interiors & Exteriors

Over 25 Years Experience
Local References Provided

sharrispropainter@hotmail.com

FREE ESTIMATES



JOHN MILLER

BESPOKE UPHOLSTERY EST 1990



We are a family run upholstery business in Shepperton offering Quality Bespoke Upholstery by our team of highly skilled upholsterers with over 25 years experience in the trade.

- ▶ Antique & Modern Re-Upholstery
- ▶ Bespoke Sofas Chairs & Headboards, etc.
- ▶ Tailored Loose Covers
- ▶ Extensive Fabric Collections (or supply your own)



01932 224503

Email us at: enquiries@johnmillerupholstery.com or visit
our website: www.johnmillerupholstery.com
143 Green Lane, Shepperton, TW17 8DY

We do hope you are all keeping safe and well during this unprecedented time – Thank you to the NHS and Keyworkers!



Charlton Village Residents Association

June 2021

Dear All

By the time you have read this we will have had our AGM, discussed the past year, introduced our new County Councillor and formed a new committee. However, it's still not too late to join the committee. Help is always needed and most welcomed, with representation especially from Queen Mary Rd and beyond as representation has always been scant from this part of the Village.

When you read through the minutes of the AGM you appreciate what a horrendous year it was and how things affected everyone, everywhere.

I'm glad that we are coming out of this Covid cloud and that things are opening up.

We have a new Tea Room opening in one of the shops near the Village Hall. Dramatize, which is sponsored by Shepperton Studio. Dramatize <https://dramatizetearoom.co.uk> will be selling afternoon tea and cakes etc. Tel 07554 780 272

The Harrow Pub the oldest pub in Middlesex has fully reopened covid compliant, both inside and outside, serving food, with heaters provided in the covered garden area. This local business has suffered so much over the past year it deserves all the help that residents can give. The Harrow has always supported the Residents Association, helping us when we have raised money for the village and charities. So please help them to support us. The Harrow phone number for queries is 01932 783 122 or 07459 492 474. Good luck to Lyle and Pria.

We have started to put arrangements in place for events this summer but we are holding back on confirmation until the new committee is confirmed, and we can finalise arrangements.

Currently we are looking towards a Summer BBQ / Summer Funday / Halloween, a Bonfire event and Christmas.

In addition, we are collecting for a memorial bench and tree in the park for Gwen.

We have spoken to Spelthorne Council, as they own the park, and were informed that a bench would cost £800 plus the tree. We have started a separate collection towards this, but we are still short, and the Residents Association will be adding to it. Likewise the borough councillors are giving donations from their Spelthorne Community Grant money.

For those of you who don't know Gwen, she was the last resident in Charlton Village to have been both born and died in the village. We feel that her 80+ years should be marked, and as she spent so many hours in the park, talking to children and parents we feel that this would be a lasting and appropriate tribute. If you would like to contribute to this please contact any of the committee members.

Finally we are looking towards planting more trees within the village so site suggestions are most welcome.

As we are all moving ahead hopefully with things opening up, we now hope to hear from Surrey County Council as to when the traffic improvements will happen as well as the reintroduction of the Spelthorne Resident Forum, to name but a few.

Thank you for your time in reading this.

Kind Regards

Karen, Gill, Dawn, Pippa, Kevin and Frank

Contact Details for Village Queries

Karen Howkins - 07973 108146 cvramail@gmail.com



Charlton Village Shepperton Residents Group

NB:- All information correct at the time of writing.

What's in a Name?

By Monica Chard

Well, the answer is A LOT!!

We have a few very attractive new signs in the area, welcoming people to our riversides. In Lower Sunbury, the new sign at Kings Lawn, welcoming boaters to the village declares Welcome to Sunbury upon Thames...UPON???

Many residents have lived in Sunbury for many years and it has always been ON. The comments on social media were very interesting. A few didn't care, but the vast majority very much do care. This sign is simply wrong. But what is the difference, you may ask. UP-ON is used when a town straddles the river. Hence Staines upon Thames, Kingston upon Thames, Stratford upon Avon etc. But Sunbury is on only one bank of the river, so it absolutely must be ON.



As we go to press the mystery of this sign deepens. It has disappeared! So either someone has taken it as a souvenir...the one when Sunbury was nearly renamed...or it has been removed for replacement by the council. Shepperton also has a nice new sign, but in the case of Shepperton it is not ON or UPON. It says simply 'Welcome to Shepperton'. Some locals tell me that at one point it was in fact called Shepperton on Thames. Maybe we should get that changed while we are at it and have two new signs and names which are



factually and grammatically correct! My only gripe about the Shepperton sign is that it is positioned so as to entirely obscures the view upstream towards the Manor House if one is sitting on the bench under the tree behind the sign. Oh well. Nothing is perfect!

Bookkeeping

Having a good set of books isn't just a legal obligation; it could mean the difference between success or failure.

Hire a Certified Bookkeeper to do it for you...

1. Save you time
2. Save you money
3. Sort out your expenses
4. Complete your VAT returns
5. Send out your invoices and get them paid on time

Simplii Bookkeeping
Local Bookkeeping Service

Tel: 07487-350359 / 01784-251859
Email: dawn@simplii-bookkeeping.co.uk

www.simplii-bookkeeping.co.uk

Licensed and regulated by the Institute of Certified Bookkeepers (ICB)
Practice Licence Number: 22701



Please mention Shepperton Matters when responding to adverts

Gutters Cleared

We remove leaves - moss - grass - growth & debris

No Problem No Call Out Charge

Photos
Before & After



Shepperton
& surrounding areas

VISA

Maestro

MasterCard

Working Safely
**Contact
Free**

during Coronavirus

See
gutterpro.co.uk
for more information



9000+ Reviews
4.96 Excellent

★ REVIEWS

Get an instant price
01932 809 713

or online
gutterpro.co.uk

Jolly Brit Restoration

By Heather Dennett

There's been renewed enthusiasm about the idea of a new Royal Britannia in the wake of Prince Philip's death. He was closely involved in the commissioning and design of the previous royal yacht. In service from 1954 until 1997, the original Royal Yacht Britannia was the 83rd official royal yacht of a British monarch since Charles II became King in 1660. At 126 meters in length and a crew of 220 yachtsmen, Royal Britannia was a large ship and as part of her original design alongside her construction required tenders, smaller crafts to hang off her side to serve as support and were designed to fulfil a wide variety of purposes from ferrying passengers to collecting supplies. In Britannia's case two of these so-called 'Jolly Boats' and were used by members of the Royal Family and other guests when enjoying trips ashore from the yacht.

In the late 1990s spotted languishing on the Union Canal at Brentford Jolly Brit, one of the Britannia's dedicated Jolly Boats, lay discarded and decaying. Britannia was by this time retired. She now resides at Ocean Terminal, Leith in Edinburgh and is one of the UK's most popular tourist attractions. Jolly Brit's fate did not take such a fortunate turn.

It was Henry Butt who spotted Jolly Brit on the Grand Union and purchased her. Then began a labour of love to restore her over the next two decades. She was a mess and he did his best to get her shipshape enough to join the hundreds of ships of historical importance to celebrate the Queen's Diamond Jubilee pageant back in 2012. But it was going to take a collaborative effort of many to get this Jolly Boat back to Royal standards.

In autumn 2020 Stuart Humphries, an old friend of Henry Butt, spotted Jolly Brit tucked at the back of a muddy field near Bell Weir Lock Egham. He was horrified when he heard that she was due to be broken up. Soon he had signed himself up as project manager to help Henry in his dream of restoring this little piece of royalty. Stuart, approached Dennett's in Chertsey who were then commissioned.

Restoration began in January 2021. Stripping back the rotten mahogany hull to essentially the skeleton of the vessel, revealed many rotten ribs which would require replacement. All new mahogany planking in two layers was then painstakingly applied to the hull to create a strong and durable

vessel that without a doubt will last another 70 years. By the end of January, she had been re ribbed, planked, primed and turned over ready for some intricate woodwork to her topsides and interior. She was then handed over to the decorating team who spent many weeks painting and varnishing applying up to 12 coats to achieve the ultimate shine.

During this time, Henry informed the Royal Palace of the restoration and the Queen herself has conveyed in writing to Henry her gratitude for his dedication, even recalling memories of using Jolly Brit in Africa feeding crocodiles.



4 months since works started the Jolly Brit was relaunched. Congratulations to the owner, Henry who is 92 years old, to see his beloved Jolly Britt a floating icon and to have his legacy documented

in preserving the future of her makes him and this restoration a very special one indeed.



Henry Butt and Monica Chard onboard and the Gloriana behind, at the Mayoral river pageant, Sunbury to Staines in 2017

Mouse Tales - Children's book by local author

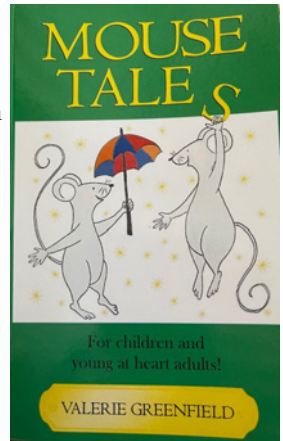
In the March issue of Sunbury Matters we ran an article on self-publishing and from time to time we hear of locals who have done just that. Some have even been taken on by publishers. Lockdown has been a period of creativity for many.

So here we have Mouse Tales, the tale of two mice, Sniffy and Yummy, who are regularly told by their mum to stop playing computer games and get outside instead (sound familiar to many of you?!).

When they eventually do, they get hooked on the outdoors, inventing games, meeting other mice and having fun, learning new skills, as well as getting into the odd bit of trouble. It is a kind book, sharing family relationships and friendships and very much supporting the concept of interacting with each other and enjoying a simple life.

The book carries beautiful illustrations by the author herself, as well as some feedback from readers. *"Even though I am 13, I really liked the stories because of the exciting adventures Sniffy and Yummy do and what they teach you about life"* said Levina H. *"A collection of kind, calming tales perfectly suitable for bedtime"* says Victor.

It is the first book by Staines based Valerie Greenfield and is available from Waterstones, Foyles and on Amazon. Check out Valerie's website www.valeriegreenfield.com where you will also be able to find out about the plans for a teapot museum to support a rural community!



GAROLLA

ROLLER SHUTTER DOORS



Great For:
 Space Saving
 Kerb Appeal
 Ease of Use

0800 468 1982

THERMALLY INSULATED ELECTRIC GARAGE DOORS



CE Approved

- Acoustic & Thermal Insulation
- Brush Sealed Rails
- Pay on Completion
- Two Remote Controls
- 18 Colours Available





Free Disposal of your Old Door!

Save £459

Garolla can save a lot of space inside your garage. Rolls up vertically into a box. Takes only 8 inches of headroom! Opens vertically so you can park up close to the door. Remotely open/close the garage even from inside your car.

LIMITED OFFER - was £1354

NOW ONLY £895

INC. VAT & FULL FITTING

MADE TO MEASURE, CALL US TODAY

01932 645 065

Phone Lines Open 7 Days a Week

07537 149 128



- Offer valid for openings up to 2.6m wide & inc: 2 Remote Keys, 55mm White slats, Internal manual Override -

Please mention Shepperton Matters when responding to adverts



Cartoons by Helen Turner, Shepperton Artists




Go On Gardening


Friendly and reliable garden maintenance


Eco-friendly and affordable service for private residences in Shepperton.

 07429885525
 leon@go-on-gardening.co.uk
 www.go-on-gardening.co.uk




- Curtains, blinds, shutters & awnings
- Large selection of fabrics & carpet samples
- Measuring and fitting service
- Electronically operated tracks & blinds
- Consultations in your home or office

Unit 13, Vicarage Farm,
 Halliford Road, Sunbury-on-Thames
 Middlesex TW16 6DW

CALL US NOW: 01932 252880
sales@decorama.co.uk www.decorama.co.uk

The Importance of Bees

Why are bees important?

What did you have for breakfast today? Granola with fruit? Jam on toast? Maybe a fry-up with grilled tomatoes? Perhaps all washed down with a fruit juice or tea or coffee? The natural behaviour of pollinating insects such as bees, hoverflies, butterflies, beetles and even moths created these products. Without these industrious little workers, much of what we eat would not exist. Research has also revealed that plants pollinated by bees grow stronger and have better quality fruit, enabling successive bee generations to stay strong too.

The bad news?

Bees have been around for millions of years, but in the last 10 years their numbers have plummeted. In the UK there are an amazing 230 species divided into three types, the fat bumblebee, the tiny solitary bees and the well known honey bee. Incredibly, none are protected by law. Scientists say habitat loss and pesticides have had the largest impact on bee numbers, and bees are struggling to cope. Since the 1930s Britain has ploughed up or built upon 97% of its wildflower meadows and grasslands, and the use of pesticides on remaining land has rocketed.

In 2019 a study showed a third of wild British bees are in serious decline, with all species in decline overall. It is estimated every square kilometre of land in the UK has lost an average of 11 species of bee and hoverfly since the 1980's, and the loss is speeding up, which leaves a natural world that is fundamentally poorer and less able to adapt to further changes, such as global warming. Global warming has been shown to affect flowering times, and with little or no food available bees can starve. Bees naturally pollinate plants as they feed. Without this essential service, the reproduction of plants, flowers and fruit means other wildlife could die out too. The loss of such a fundamental foundation in the way



nature functions is likely to create catastrophic problems in the not too distant future to the human food chain as well as the economy. With seven billion humans on this planet and rising, food is a serious issue.

The good news?

You can help. Despite the outlook for bees being quite bleak right now there is a lot you and local communities can do to help. Different bees have different mouthparts so not all

can feed on the same flowers. The secret to attracting many bees is to grow a wide variety of flowering plants with open shapes, that flower at different times of the year from Spring through to Winter. If you also provide places to nest and rest, bees can thrive.

The following species are great for bees – Lavender, Scabious, herbs such as Rosemary, Thyme or Mint, vegetables such as tomatoes, potatoes and courgettes. Buddlia, fruit trees such as apple or cherry, strawberries and raspberries along with wildflower mixes. Foxgloves are a favourite, as are crocus, Aubretia, Borage, Honeysuckle, Snapdragons and Sedum.

There are other things you can do to help:

- Don't use pesticides in the garden, particularly on flowering plants. Studies have shown gardens that use pesticides are virtually devoid of life except pests, and yet pesticide free ones have more variety and fewer pests because natural predators can survive.

- Join Bug Life, the worlds only insect conservation charity, or your local Wildlife Trust

- Campaign for garden centres to sell organic plants – see the Bumblebee Conservation Trust website <https://www.bumblebeeconservation.org>

- The Wildlife Trusts have excellent booklets and advice about bee gardening on their website <https://www.wildlifetrusts.org>

Keeping our Community Safe

By Tracy Moore, Neighbourhood Watch
and Bill Cunningham, Scamwatch

Shepperton Neighbourhood Watch update

By Tracy Moore

Shepperton has recently experienced identity theft with one suspect (from outside the area) arrested and under investigation. Some simple protection measures are provided below.

- Obscure your personal details from any bill or important letter before placing in the bin.
- Use 'identity protection roller stamps' or destruction methods such as use of a cross-shredder, completely soaking documents in water and mashing them up or burning them (safely and responsibly).
- Cut up bank and credit cards and split the pieces up across several rubbish loads.
- Check your credit history regularly for any unauthorised activity. Search on credit reports. 'Experian' and 'Equifax' are popular, but others are available and free options exist.
- Protect your incoming post. Secure any 'outside' post boxes and communal post areas so that someone cannot just simply 'pick it up'.

Be alert to packages addressed to someone else at your address or a package you did not order. Never hand these over to people claiming they were delivered to you in error without checking that you haven't been scammed and paid for these items.

Pushy Scammers

By Bill Cunningham

We've read about push payment fraud, maybe wondering exactly what it means.

Authorised Push Payment fraud is sophisticated; where we are tricked into sending someone money from our bank account; there and then. Because it's an instant payment, the money is already gone before any victim is able to reclaim it. Gone often to different accounts, probably abroad, which means that getting it back is near impossible.

It would be nice, really nice if all banks gave us all of the defrauded amount back, but life can be cruel. Since we technically gave the information willingly, it's a challenge to get compensation. Especially from a few banks that have so far refunded just about 5% of APP fraud claims submitted to them.

In the first half of last year the hit was over £200m to some 65,000 victims.

The call from our "bank's" fraud team to say our account has been defrauded can kick it all

off. But c'mon – we know, don't we, that ANY call out of the **blue** is suspect! Especially if the caller is asking us to do something unusual, and in haste. The best response is to have a cuppa, then call the number we really know **is** the bank and find out what's the issue, To find then, of course, that there is **none**.

Suspicious emails we forward to report@phishing.gov.uk Texts to **7726**

We may well wonder too, just how the scammers know so much about us. That alas is because we tell them, mainly on social media. Most people are very open about telling all about what's happening in their lives. Buying a new house or car or holiday plans. Great scamming clues for the baddies to grasp and use. To prise out even more information when they approach us to help us. It's nice to be nice but let's be mean about giving clues about ourselves to the world.



Rosewood
Garden Maintenance

NEED HELP TO MANAGE YOUR GARDEN?

Call us today to book an appointment
07393 821797

Or find us online:

-  Rosewood Garden Maintenance
-  rosewoodgardeninfo@gmail.com
-  www.rosewoodgarden.co.uk
-  Rosewood Garden Maintenance

Our team are here for you!



PLUMBER



NO JOB TOO SMALL!

Established over 30 years

**Trustworthy Local Sunbury resident,
happy to work on small jobs.**

Qualified to work on unvented systems
Can repair and service solar thermal systems

01932 703 182 • 07715 667058
peterjgame@sky.com

George Scott Woods Carpentry Services



07715 541474
g.woods@live.co.uk

Bespoke fitted furniture
Kitchen • Bedroom • Bathroom
1st and 2nd fix Carpentry
Local Sunbury Resident

Vehicle damaged? Don't delay, repair it today

» Bumper Scuffs? » Paint Scratches? » Minor Dents?



*"Brett was friendly, polite and on time!
His workmanship is superb and wonderful value
for money!"*

Call or go online today for your FREE estimate

Call Brett

07803434046

brett.cunningham@chipsaway.co.uk



ChipsAway

LIKE IT NEVER HAPPENED



Shepperton Beat

By Inspector Maxine Cilia



Inspector Cilia

As I write this for the June edition more lock down restrictions have been lifted. It is lovely to see that we can visit our locals, out of the rain, go for dinner in the warmth at the local restaurant and visit gyms and cinemas. However as we all get out

more and more, that leaves our property empty and vulnerable. I know I constantly repeat myself when I say please review your security. People spend a fortune on all the nice things that go into a house, expensive TVs computers and sound equipment but when it comes to spending on home security, often it is a last thought and an expense that is avoided.

There is so much you can do on a budget, such as defensive planting of shrubs and bushes at perimeter fences. Replacing a lock on a back gate, fake cameras, easy solar lighting of dark areas. Other really easy tips such as lock away tools so they are not accessible, put away ladders and wheelie bins so it is harder to climb over gates and walls, and lock garages and sheds. Joining your local Neighbourhood Watch costs nothing <https://www.ourwatch.org.uk/>.

Current crime trends include thefts of bicycles once again from sheds and gardens. The favourite type of bike is an electric bike due to their value. Please consider a really substantial bicycle lock if you have an expensive bike and lock it to a substantial pole or fitted bracket. Please also register your property on the National Property Register <https://www.immobilise.com/> or bike register <https://www.bikeregister.com/>. We have also seen a

trend of persons not locking their vehicle properly and finding miscellaneous items missing in the morning such as loose change, sunglasses and wallets. Please remember to lock your vehicles and do not leave credit cards and cash in your vehicles overnight. One of the other common complaints that we are receiving is the use of Electric scooters. In Spelthorne and the whole of Surrey, Electric scooters are illegal to ride on public roads and pavements. There are few trial areas in the country where pilot projects are looking at the use of electric scooters provided to hire with safety equipment and helmets. If you are riding an electric scooter on the road or pavement in Spelthorne you are committing an offence. All electric scooters are classed as powered transporters and they are covered by the Road Traffic Act 1988, so essentially all the law you would expect to cover a motor vehicle. This means that in order to ride them they need to be taxed, have an MOT and meet legal requirements including a number plate and signalling ability. As that is clearly not possible you cannot ride an electric scooter on a public road! The Highways Act prohibits them from being used on the pavement, and they cannot be used in cycle lanes as they do not have pedals!

It may be after the trials have finished that certain types of electric scooter will be allowed with conditions however at this time you are committing an offence and Police can seize your scooter. The only place you can legally ride an electric scooter is on private land. Other than this you face a Fixed Penalty notice for no insurance and up to £300 fine and 6 points or a Fixed Penalty Notice for no driving licence and up to £100 fine and 3 points. There are also other penalty notices for riding on a footpath, using a phone, going through red lights and drink driving offences. Thank you for on-going support and look out for 'meet the beats' in your area coming soon now restrictions are lifting.

Please mention Shepperton Matters when responding to adverts

Ashford based company, Penrose Group, takes on fund raiser

They are aiming to raise at least £500 to help Dramatize with their work helping adults with learning disabilities and MS-UK in their work helping people with Multiple Sclerosis.

Dramatize, which is also based in Ashford, is a charity that provides a range of theatrical provisions to help further the personal development of adults with learning disabilities. Their services act as a leisure activity and a platform for individuals to socialise with other peers and learn valuable life skills inspiring independence for a lifetime of creativity. Dramatize work with different ability levels, providing care and support to ensure that their services are accessible to all. Dramatize encourages their students to believe in themselves, to develop and achieve the unexpected. Every penny donated will help Dramatize to build a better future for their students. If you would like to find out more, please visit www.dramatize.co.uk.

Jas, from Penrose's Sales & Marketing team, will be cycling 321 miles over three Sportives and one off-road mountain bike ride aiming to raise much-needed funds for the two charities helping them continue their fantastic work and support they provide. You can follow the fund raising efforts and donate with the following web address:

https://www.justgiving.com/crowdfunding/penrosecyclechallenge?utm_term=dADpyRJZW

We realise that COVID-19 has impacted us all. This probably is not the best time to ask for a donation, but Dramatize, and MS-UK rely on donations to provide their outstanding support, empowering people to live a happier life with respect, care and compassion.

Your generous donations will be split equally between Dramatize and MS-UK.

Dramatize are in fact themselves going to be operating a café in Charlton village. We will bring you more news on that in the next magazine, but it is well worth supporting such a worthwhile cause.



D. Williams Carpentry & Building Ltd

Squires Bridge Rd, Shepperton
07957 458036

Kitchens Fitted

Fitted Wardrobes

Alcove Cupboards Built

Doors Hung

Timber/Laminate Flooring Laid

New Skirting

New Handrails & Spindles

Locks Fitted

Fencing • Gates

Decking

Flat Pack Furniture Assembly

Sash Cords Changed



Lock24 Ltd

*We are a local family run security business
specialising in the following:*

**Intruder Alarms, CCTV,
Access Control,
24 hour Locksmiths and
Key Cutting.**

Keep potential intruders at bay with our
CCTV and door entry systems.
Employing technology to enhance the
security of your home or business.

*Please call for a Free Quotation or
further information.*

**Tel: 01932 232070 or
07507 707546**

Please mention Shepperton Matters when
responding to adverts

New Roofs

Fascias & Soffits

Flat Roofs

Cladding

Roof Repairs

Guttering

Chimneys Rebuilt

Dry Verge Systems



www.5starroofcare.co.uk

Office: 01932 798 099

A photograph of the exterior of a two-story brick building with large windows. A white sign above the entrance reads 'Terminal House'. The entrance has glass doors and windows. The text 'Terminal House' is also visible on the glass.

**Offices To Let
in Shepperton**

- Flexible Terms Available
- 24 hour access
- Car parking available
- All prices are inclusive of rates, electricity & cleaning
- 1 - 6 person offices
- Manned Reception
- Maintenance Team
- 1 min walk to Train Station

Please Contact Lisa Philpott - Imp@iagp.uk | 01932 239202
www.tennayproperties.com

Please mention Shepperton Matters when responding to adverts

Talking Tree, community run café and venue dedicated to tackling climate emergency, opens in Staines-upon-Thames

By Suzanne O'Hara

In early 2020 a disparate group of individuals met through their shared interest in the environment and sustainable living. The group wanted to take positive action to tackle climate change in Spelthorne initially focussing on actions to minimize waste, reduce consumption, preserve natural open space and raise awareness and understanding of environmental challenges in the borough. Through a series of initial meetings, the volunteers agreed that having a physical space from which to coordinate activities would be a key priority, and so the idea for Talking Tree was born. Tony Woodward, one of the founding volunteers explained, "We were inspired to name the venue the Talking Tree after the Saxon word for Spelthorne which meant 'speaking tree' – a place where different groups would meet to discuss important issues. We want our centre to be a hub for the community, a welcoming space where anyone who lives or works nearby can come to share skills, ideas and information that will help us to collectively address the climate and ecological emergency first and foremost, but also to tackle other issues that affect the sustainability of the local community."

The group registered Talking Tree as a Community Interest Company. This means that all assets are 'locked' and profits generated will be used for the benefit of the community. Having drawn up an initial business plan, the group approached Spelthorne Council in late May 2020, requesting the council's help in finding an appropriate building. As it happened, Spelthorne Council were the owners of a vacant retail property in the heart of Staines High Street. Formerly a betting shop, the premises had been empty for an extended period and Spelthorne Council saw the benefit in supporting the Talking Tree project to re-purpose the building as a positive community space. The team took possession of the keys to the premises in early November and the ensuing months have been a flurry of activity



with a core group of volunteer labour hammering, plumbing, plastering and painting to turn a dark betting shop into a versatile community venue.

Talking Tree is a shared space dedicated to building community and improving the local environment in Spelthorne. The venue, which opens officially on 21st June, centres around an on-site café serving a vegetarian menu 'with vegan aspirations', using surplus ingredients whenever possible. Since January the Talking Tree Community Kitchen team has produced an incredible 959 portions of food, from 526 kg of near end of date food that would have ended up in landfill.

The main exhibition and performance space will provide an inspirational programme of arts, film, talks and music performance, while an adjacent meeting room and workshop will host local community groups and classes in practical skills to help participants live more sustainably. There will be a community fridge for residents to access surplus food from local suppliers and there are plans for a 'library of things' in the not-too-distant future. The entire refurbishment has been completed on a shoe-string with appliances, furniture and equipment mostly donated or salvaged and most labour being donated free of charge by volunteers who support the Talking Tree ethos. Even the beautiful fascia was crafted

Continues p58

To advertise call Monica on 07979 808991

57

Or email monica@villagematters.co.uk

from the wood hoardings which blocked the doorway of the once derelict building which Talking Tree has transformed. The Talking Tree volunteer community has already grown to around 40 individuals of all ages and a variety of backgrounds, sharing a huge variety of skills from cooking, to plumbing and website design. While Covid has delayed the opening of the venue, the team has not waited to start making an impact: Talking Tree Community Kitchen has already created an amazing 500 plates of food from fresh surplus stock which have been given free of charge to the local community; Talking Tree Biodiversity team has begun a planting project that will help increase the species diversity while also encouraging other wildlife at the Rowland Hill Almshouses in Ashford; in late March the volunteers created a swarm of giant handmade fabric bees, highlighting the Climate and Ecological Emergency Bill to residents and visitors in Staines; and Talking Tree has also hosted a series of online events including a tree themed art exhibition, a virtual music night, a waste reduction cooking class and book club nights. There are lots of ideas for new initiatives in the pipeline and the team are keen for anyone living or working locally to get involved. Pop along to 91 High Street, Staines, visit the website or get in touch via social media.



Facebook: TalkingTreeStaines **Instagram:** @talkingtree_staines www.talkingtree.org.uk

"DUSTLESS" FLOOR SANDING AND FINISHING

Parquet floors, Victorian floorboards, Real/Engineered floors, Staircases and Worktops

Coloured oils, Hardwax oils and Lacquers

WE LOVE OUR NHS

PROfloor + restore
THE ART OF FLOOR CARE

t:020 8898 4344 m:07956 282944
profloor-restore.co.uk

Get Your Oven's Sparkle Back

AS SEEN ON TV

Before After

- Ovens
- Filters
- Hobs
- Grills
- BBQs
- Ranges
- Extractors
- Microwaves
- AGAs

“ I'm simply delighted at how sparkly clean my oven and hob look now! It really does look like the cooker is brand new again! ”

★ Trustpilot
★★★★★

Call Damian today to book your appointment

07767 163008
ovenclean.com

OVENCLEAN
The Leading Brand in Domestic Oven Cleaning

To advertise call Monica on 07979 808991

Or email monica@villagematters.co.uk

SDS
Scotts Decorating Services

Interior/Exterior Domestic/Commercial
 Locally Based Fully Insured
 30 years experience

Call Andy Scott for a quote:
01784 462928
07796 542788

 **ALDRIDGE & SONS**
 Roofing Contractors & Consultants
 020 8844 0542 aldridgeandsons.co.uk

Aldridge & Sons Roofing Ltd is a well established family run business who undertake all aspects of roofing.

We are fully insured and provide free written quotations and advice.

www.aldridgeandsons.co.uk



STARR·GUTTERING

Fascias · Soffits · Bargeboards · Cladding
 Specialists in Aluminium and PVC guttering

Est. 1995 - Over 3000 Installations

Free Estimate - No Deposit Required

01932 226001

enquiries@starrguttering.co.uk

www.starrguttering.co.uk

PAIGE ELECTRICS

REWIRES
 FAULT FINDING
 CONSUMER BOXES
 ALTERATIONS
 EXTRA SOCKETS AND LIGHTS

COOKER POINTS
 SMOKE DETECTORS
 EXTERIOR LIGHTING
 POWER TO GARAGE
 ARE YOU RCD PROTECTED?

LOCAL RELIABLE SERVICE - FULLY INSURED

Office: 01932 711196

Mobile: 07880 715856

franklin383@btinternet.com



1	6	2	4	7	3	8	9	5
3	7	5	8	9	2	4	1	6
9	8	4	1	6	5	7	2	3
4	1	6	5	2	8	9	3	7
5	9	3	7	4	1	6	8	2
7	2	8	6	3	9	1	5	4
6	5	9	2	8	7	3	4	1
8	4	1	3	5	6	2	7	9
2	3	7	9	1	4	5	6	8

Solution to June Sudoku

G	A	L	L	E	R	Y		S	C	U	B	A	
	C		I		O		F		A		A		
T	H	I	G	H	S	L	A	P	P	I	N	G	
	I		H		I		B					G	
K	N	I	T	W	E	A	R			O	B	E	Y
	G		B				I		S		R		
				P	U	B	L	I	C	I	T	Y	
	S		L							R		N	
S	T	U	B			C	O	L	L	I	D	E	D
	A					K		E		C		L	
T	R	E	A	S	U	R	E	C	H	E	S	T	
	C		R		P		C		E		O		
K	H	A	K	I			C	H	A	S	I	N	G

Solution to June Quick Crossword

Gardening Matters

The Garden Goddess

Iris was the goddess of the rainbow in Greek mythology. I have a thing for Greek mythology, and I love Irises. The large, bearded types unfurl at this time of year and they reflect the colours of the spectrum from deepest purple, through dusky orange, egg-yolk yellow and the most delicate of blues, to the brightest of whites. They comprise of standard petals, which are carried aloft over the graceful fall petals,



which arch downwards. From the upper bases of the falls grow groups of fuzzy hairs called beards and from this the bearded Iris gets her name. Even the foliage is attractive: large pale green swords that shoot straight upwards from the earth.

Bearded Irises love full sun and prefer to have their fleshy rhizomes (the underground stems) near the soil surface so they can take full advantage of the sun's warmth. They actually prefer a more impoverished soil, so if your soil is a bit thin and dry they may be perfect for your garden.

As the clumps become overcrowded the centres die out. Dig them up immediately after flowering and chop them into single healthy rhizomes, each with a fan of leaves. Shorten each fan with scissors by about half, then replant about 30cm apart in another sunny spot so that the rhizomes are just visible under the surface. Although they like drier conditions make sure they are watered in and looked after for a few weeks until established. But really you don't need to do much to them. Overly enriched soil is not a

friend to the iris, which might decline to flower in such conditions. My best flowering plants are in the driest, most sun-baked part of my plot!

But for those who have shadier gardens and boggy conditions try the non-bearded *Iris sibirica*. I have one in a sun-dappled spot by a water feature. Its leaves are greener and grassier, which complements the water, and it has lovely rich blue flowers which look particularly nice in the shade. I also like *Iris ensata*, which I plant by my pool at the water's edge. It's also a good choice in borders if you garden on richer soil than mine.

So, invoke the power of the Goddess Iris in your garden, and enjoy the rainbow of colour.

Happy gardening,

by Rachael Leverton

Tree Work

Clive's Tree Surgery

Tel: 01932 886524



- Pruning, Felling & Reducing
- Reshaping & Thinning
- Hedge Maintenance
- 24 Hour Emergency Service
- Dangerous Tree Removal
- Stump grinding
- Neighbouring Tree & Hedge Issues
- Operated wood-chipper hire
- River tree work workboat available
- Seasoned logs delivered. Log splitting

Contact Clive:

01932 886524 or 07941 031759 (Eves)
surreyarbort@gmail.com

THE ARTS SOCIETY RUNNYMEDE continues to bring its popular monthly lectures via Zoom. While lecturers cannot be present in person, their lectures are live and followed by Q and A sessions. Guests are very welcome for a fee of just £5 and help is at hand for those not familiar with Zoom. To experience the next lectures and find out what the Society has to offer do please drop us a line at: info@theartssocietyrunnymede.org.uk

Food and Art Through the Ages

Wednesday 16th June at 10.30

A whistle-stop tour of the history of food as artistic medium; starting with 16th century sugar sculpture to 3D dessert printing and beyond.. Topics covered include the origins of dessert, architecture, including Renaissance banqueting houses, through to the future of food. Hosted by award winning Food Historian and artist Tasha Marks.



Molesey Pest Control

Member of the British Pest Control Association
Full Public Liability Insurance Cover



Wasps

Bees • Rats

Mice • Ants

Squirrels

Moles

T: 020 8979 1670

M: 07733 895213

www.pestcontrol-surrey.co.uk



Beautiful lawns at affordable prices



For a perfect lawn, put your trust in the experts

Lawn master[®]
perfection with grass



For your FREE consultation, call Simon on 0800 156 0538

or 01252 511 987

simon.marsh@lawnmaster.co.uk



/LawnMasterUK

Index of Advertisers

Alteration/Tailoring	SJ Harris	44	The 1-1 Diet	31	Owen White & Catlin	35	
Shepperton Tailoring	30	SDS	59	Kitchens/Bedrooms		Taxi Service	
Awnings/Pergola		Electrician		Ashford Kitchens	5	VA Cars	42
MOL Solar	12	Paige Electrics	59	Locks/Security		Upholstery	
Beauty/Aesthetics		Boss Electrics	44	Lock24 Ltd	55	John Miller	44
Facial Body Sculpt	20	English Lessons	6	Mobility Services		Will Writing	
Bookkeeping		Equity Release		Shep. Mobility	22	Harvest Wills	44
Simplii	46	Harvest Financial	38	Office Space		Windows	
Café		Estate Agents/Property		Tennay Property	56	House of Surrey	63
The Ferry Café	16	Curchods	32/33	Osteopath			
Car Services		EweMove	2	Align Osteopathy	8		
ChipsAway	53	Plan & Design	13	Ovencleaning	58		
Care/Nursing Homes		Events		Pest Control	61		
Parklands Manor	28	Textile Exhibition	9	Pharmacy/Walk in			
The Burlington	19	Floor Care	58	Trio Pharmacy	22		
Rivermede Court	15	Flowers/Fruit/Veg		Photographer			
Care at Home		Quality Fruit	14	Stephen Andrews	30		
GA Carers	23	Footcare		Plumber			
Visiting Angels	11	Mary Judge	38	Pete Game	53		
Carpenter		Funeral Services		Roofing			
George Scott Woods	53	Alan Greenwood	25	Aldridge Roofing	59		
D Williams	55	Garage Doors		5 Star Roofing	56		
Chartered Surveyor		Garolla	49	Schools/Education			
Nick Cobb	42	Gardening		Halliford School	64		
Chiropodist		Lawnmaster	61	Sell for Cash			
Rod Littlewood	22	Surrey Arborist	61	JC Stamps	40		
Computer Repair		Rosewood	53	Trident Coins	40		
My PC Helper	8	Gutters		Robs records	40		
Curtains & Blinds		Starr Guttering	59	Retro & Vintage	40		
Decorama	50	Gutter PRO	47	Shutters			
Decorator		Health/Fitness		Decorama	50		
Chris White	38	Barre Classes	6	Solicitor			



Your Local Mags

Sunbury Matters
 Shepperton Matters
 Molesey Matters
 Walton Matters
 Call 07979 808991
monica@villagematters.co.uk

Advertising Rates (Ex VAT)

1/8th page	£38
Quarter page	£68
Half page	£135
Full Page	£235

Discount on block bookings

July/August issue Deadline

June 16th

monica@villagematters.co.uk

Or call
07979 808991

Or now book online
www.villagematters.co.uk

Disclaimer: Whilst every care has been taken to ensure accuracy of the information included in this publication, neither the publisher nor the editorial contributors can accept any liability to any party for loss or damage caused by errors or omissions resulting from negligence, accident or any other cause. Shepperton Matters does not endorse any advertising material included in this publication. No part of this publication may be reproduced, stored in any retrieval systems or transmitted in any form without prior permission of the publisher.

Please mention Shepperton Matters when responding to adverts

Quality Products and Workmanship at Realistic Prices

We are Celebrating
35 Years in Business



HOUSE OF SURREY

ESTABLISHED 1985

Windows & Doors

01932 228788 Shepperton

209 Laleham Road, Shepperton, Middlesex TW17 0AH

**Our staff are all
observing the
government health
and safety guidelines
to keep customers
safe**



FENSA

vevo select
Let the light in installer

Checkatrade.com

* subject to terms and conditions

Info@houseofsurrey.co.uk

www.houseofsurrey.co.uk

Independent Senior Day School

Boys 11–18 years

Girls 16–18 years



Halliford
School
1921 - 2021

Open Events 2021

Open Morning — Saturday 2nd October 9.30am – 12noon

Sixth Form Open Evening — Wednesday 6th October 6pm - 8pm

Visitor Mornings — Thursday 4th & Tuesday 9th November

Tours at 9.30am & 11.30am

Book now at: www.hallifordschool.co.uk



At Halliford your child will be known and respected as an individual and encouraged, supported and inspired to become the best version of themselves that they can possibly be.

- Extensive coach service covering the surrounding area
- Short walk from Shepperton Station
- Shuttle service from Walton and Staines Stations

Halliford School • Russell Road • Shepperton • TW17 9HX

registrar@hallifordschool.co.uk

01932 223593

